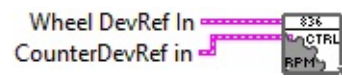
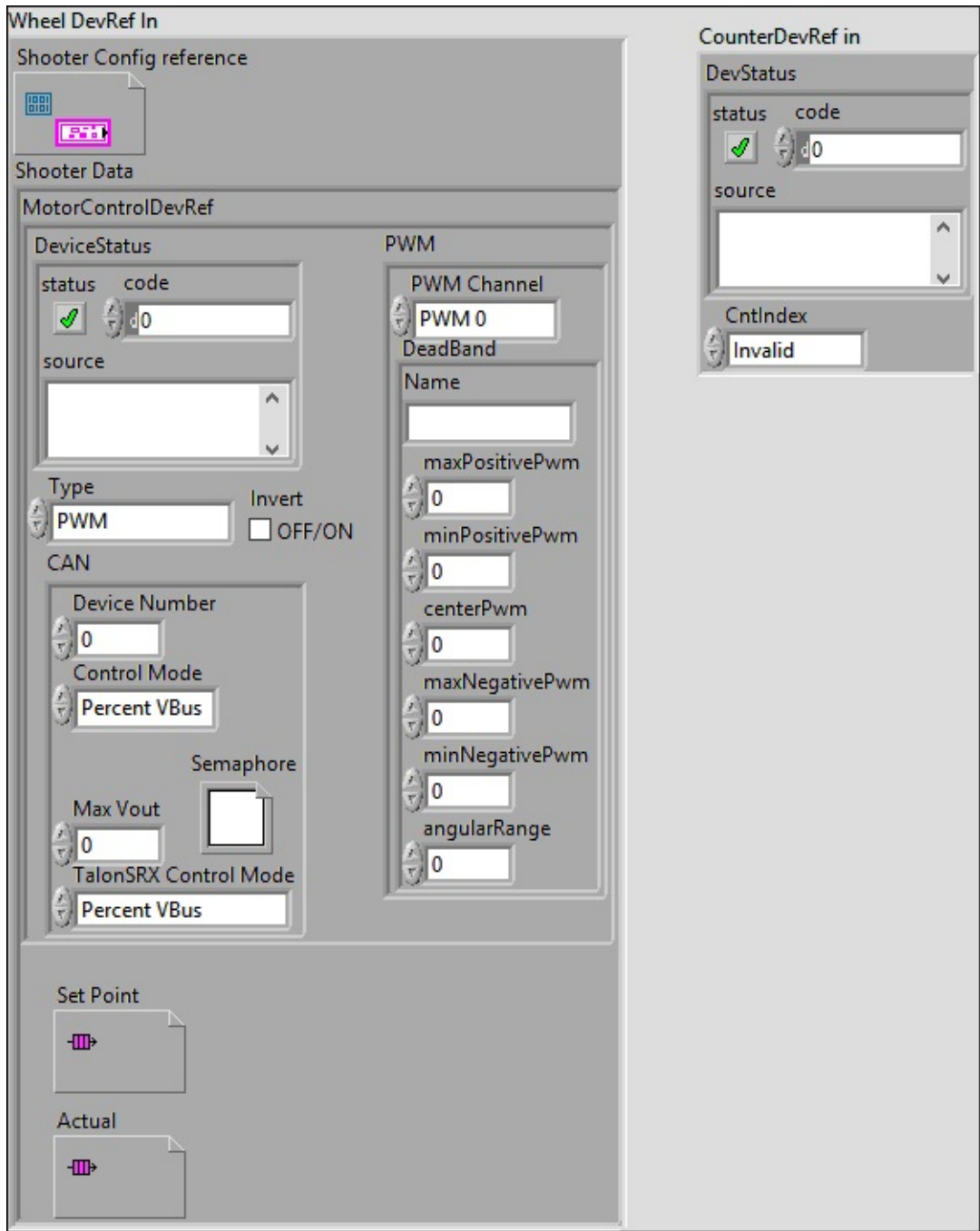


Wheel.lvlib:Wheel_Control_RPM.vi

Help by FRC Team 836 - The RoboBees

This VI is used to set the Revolutions Per Minute (RPM) of a wheel.





 **Wheel DevRef In**

 **Shooter Config reference**

Shooter Data

MotorControlDevRef

DeviceStatus

status

status is TRUE (X) if an error occurred or FALSE (checkmark) to indicate a warning or that no error occurred.



Right-click the **error in** control on the front panel and select **Explain Error** or **Explain Warning** from the shortcut menu for more information about the error.

code

code is the error or warning code.



Right-click the **error in** control on the front panel and select **Explain Error** or **Explain Warning** from the shortcut menu for more information about the error.

source

source describes the origin of the error or warning.



Right-click the **error in** control on the front panel and select **Explain Error** or **Explain Warning** from the shortcut menu for more information about the error.

Type

PWM

 PWM Channel

 DeadBand

 Name

 maxPositivePwm

 minPositivePwm

 centerPwm

 maxNegativePwm

 minNegativePwm


 angularRange

 CAN

 Device Number


 Control Mode

Semaphore

 **semaphore** is a reference to an existing or newly created semaphore.

 Max Vout

TalonSRX Control Mode

Control Mode specifies how the Talon SRX will  control the motor. Percent VBus is the standard open-loop mode that is also accessible via the PWM interface on the Talon SRX.


 **Invert**

 **Set Point**

 **Actual**

 **CounterDevRef in**

DevStatus

error in can accept error information wired from VIs previously called. Use this information to decide if any functionality should be bypassed in the event of errors from other VIs. 

Right-click the **error in** control on the front panel and select **Explain Error** or **Explain Warning** from the shortcut menu for more information about the error.

status

status is TRUE (X) if an error occurred or FALSE (checkmark) to indicate a warning or that no error occurred.



Right-click the **error in** control on the front panel and select **Explain Error** or **Explain Warning** from the shortcut menu for more information about the error.

code

code is the error or warning code.



Right-click the **error in** control on the front panel and select **Explain Error** or **Explain Warning** from the shortcut menu for more information about the error.

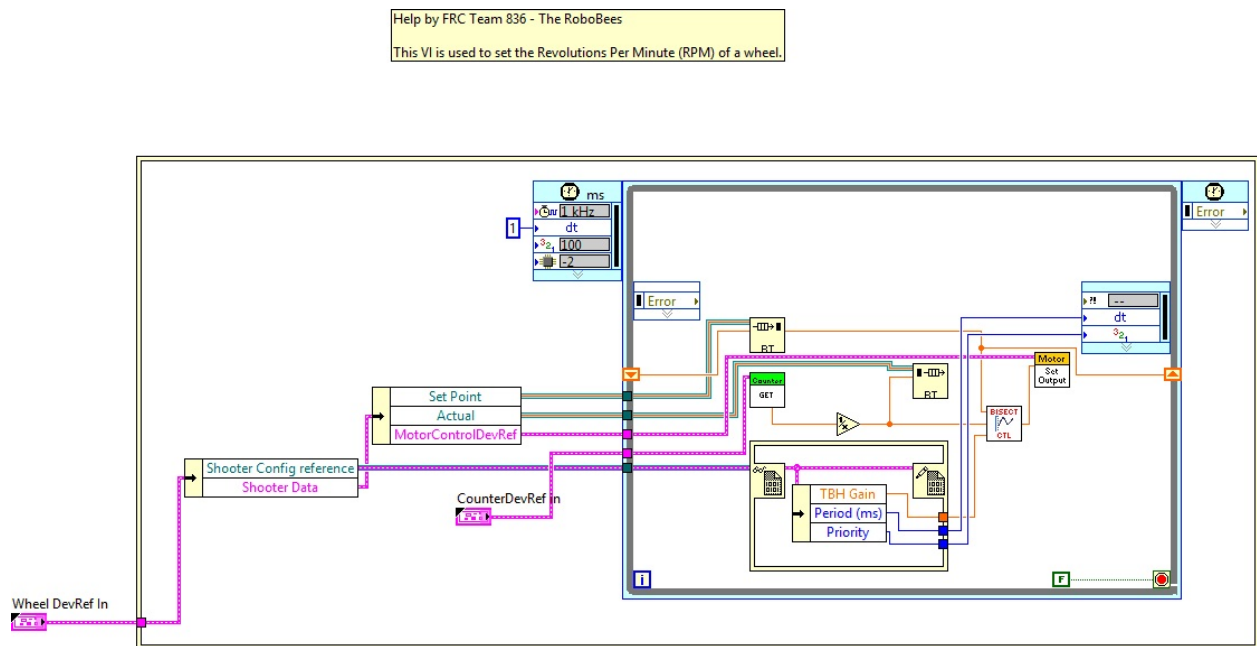
source

source describes the origin of the error or warning.



Right-click the **error in** control on the front panel and select **Explain Error** or **Explain Warning** from the shortcut menu for more information about the error.

CntIndex



Wheel.lvlib:Config.ctl



C:\Program Files (x86)\National Instruments\LabVIEW 2015\user.lib\836-

Library\Motion Control\Shooter_Wheel\Config.ctl

Wheel.lvlib:Data.ctl



C:\Program Files (x86)\National Instruments\LabVIEW 2015\user.lib\836-Library\Motion Control\Shooter_Wheel\Data.ctl

Wheel.lvlib:WheelControl.ctl



C:\Program Files (x86)\National Instruments\LabVIEW 2015\user.lib\836-Library\Motion Control\Shooter_Wheel\WheelControl.ctl

WPI_CounterDevRef.ctl



C:\Program Files (x86)\National Instruments\LabVIEW 2015\vi.lib\Rock Robotics\WPI\Counter\WPI_CounterDevRef.ctl

WPI_CounterGet.vi



C:\Program Files (x86)\National Instruments\LabVIEW 2015\vi.lib\Rock Robotics\WPI\Counter\WPI_CounterGet.vi

FPGA_CounterCtrSystemIndex.ctl



C:\Program Files (x86)\National Instruments\LabVIEW 2015\vi.lib\Rock Robotics\SystemInterfaces\Counter\FPGA_CounterCtrSystemIndex.ctl

tbh.vi



C:\Program Files (x86)\National Instruments\LabVIEW 2015\user.lib\836-Library\Motion Control\tbh.vi

WPI_MotorControlSetOutput.vi



C:\Program Files (x86)\National Instruments\LabVIEW 2015\vi.lib\Rock Robotics\WPI\MotorControl\WPI_MotorControlSetOutput.vi

WPI_CANTalonSRX_APIControlMode.ctl



C:\Program Files (x86)\National Instruments\LabVIEW 2015\vi.lib\Rock Robotics\WPI\CAN\TalonSRX\WPI_CANTalonSRX_APIControlMode.ctl

Semaphore RefNum



C:\Program Files (x86)\National Instruments\LabVIEW 2015\vi.lib\Utility\semaphor.llb\Semaphore RefNum

FPGA_DIOPWMChannel.ctl



C:\Program Files (x86)\National Instruments\LabVIEW 2015\vi.lib\Rock Robotics\SystemInterfaces\DIO\FPGA_DIOPWMChannel.ctl

WPI_MotorControlType.ctl



C:\Program Files (x86)\National Instruments\LabVIEW 2015\vi.lib\Rock Robotics\WPI\MotorControl\WPI_MotorControlType.ctl

WPI_MotorControlDeviceRef.ctl



C:\Program Files (x86)\National Instruments\LabVIEW 2015\vi.lib\Rock Robotics\WPI\MotorControl\WPI_MotorControlDeviceRef.ctl

WPI_CANJaguar_ControlMode.ctl



C:\Program Files (x86)\National Instruments\LabVIEW 2015\vi.lib\Rock Robotics\WPI\CAN\Jaguar\SubVIs\WPI_CANJaguar_ControlMode.ctl

WPI_PWMDeadband.ctl

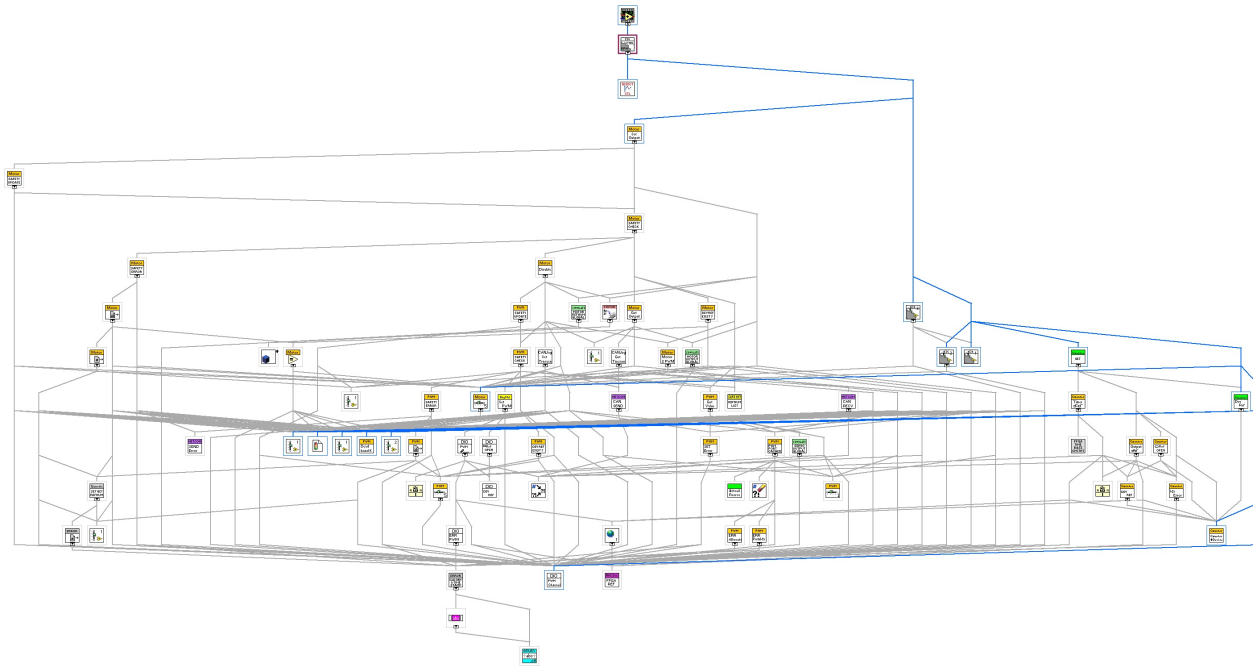


C:\Program Files (x86)\National Instruments\LabVIEW 2015\vi.lib\Rock
Robotics\WPI\PWM\WPI_PWMDeadband.ctl

"Wheel.lvlib:Wheel_Control_RPM.vi History"

Current Revision: 15

Position in Hierarchy



Iconified Cluster Constants