
TortoiseGitMerge

[Next](#)

TortoiseGitMerge

A diff/merge tool for Windows

Version 2.4.0

Stefan Küng

Lübbe Onken

Simon Large

Sven Strickroth

Table of Contents

Preface

1. TortoiseGitMerge is free!
2. Acknowledgments

1. Introduction

1.1. Overview

1.2. TortoiseGitMerge's History

2. Basic Concepts

2.1. Viewing and Merging Differences

2.2. Editing Conflicts

2.3. Applying Patches

- 3. Using TortoiseGitMerge
 - 3.1. Viewing Modes
 - 3.1.1. Viewing / Merging
 - 3.1.2. Applying Patches
 - 3.2. Buttons and Other Controls
 - 3.3. Line Status Icons
 - 3.4. Merging / Editing Conflicts
 - 3.5. Open Files
 - 3.5.1. Viewing / Merging
 - 3.5.2. Applying Patches
 - 3.6. Settings
 - 3.6.1. Main Settings Page
 - 3.6.2. Colour Settings Page
- A. keyboard shortcuts
 - A.1. Keyboard shortcuts
- B. Automating TortoiseGitMerge
 - B.1. TortoiseGitMerge Command Line Switches
- Glossary

List of Figures

- 1.1. File Conflict
- 2.1. File Conflict
- 3.1. One Pane View
- 3.2. Two Pane View
- 3.3. Three Pane View
- 3.4. Patch File List
- 3.5. The Open Dialog
- 3.6. The Settings Main Page
- 3.7. The Settings Color Page

List of Tables

- B.1. List of available command line options

Preface

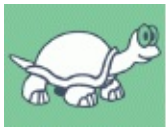
[Prev](#)

[Next](#)

Preface

Table of Contents

1. [TortoiseGitMerge is free!](#)
2. [Acknowledgments](#)



Tortoise Merge

When working on a project, either an open-source project where several people review your code, or a commercial project where you sell a component with your source code, there will be people and customers who find bugs or want to improve your project. To do that they send you patches which you have to review and decide if you want to apply them.

TortoiseGitMerge helps you with both those tasks:

- Reviewing patches
- Applying the patches

TortoiseGitMerge also helps you to sort out conflicted files which can occur if you're working with a source control system and others are working on the same files as you.

1. TortoiseGitMerge is free!

TortoiseGitMerge is free. You don't have to pay for it, you can use it any way you want. It is developed under the GP license (GPL).

TortoiseGitMerge is an Open Source project. That means you have full read access to the source code of this program. You can browse it on this link <https://tortoisegit.org/sourcecode> .

Donate!

Even though TortoiseGit and TortoiseGitMerge are free, you can support the developers by sending in patches and play an active role in the development. You can also help to cheer us up during the endless hours we spend in front of our computers.

Please also have a look at the list of people who contributed to the project by sending in patches or translations.

[Prev](#)

TortoiseGitMerge

[Home](#)

[Next](#)

2. Acknowledgments

2. Acknowledgments

[Prev](#)

Preface

[Next](#)

2. Acknowledgments

TortoiseGitMerge is a port of TortoiseMerge (from TortoiseSVN project).

Stefan Küng

for the hard work on TortoiseMerge

Lübbe Onken

for the beautiful icons, logo, bug hunting and taking care of the documentation

Frank Li and Sven Strickroth

for the porting TortoiseMerge to TortoiseGitMerge, the (Tortoise)Git version.

The Tigris Style project

for some of the styles which are reused in this documentation

Our Contributors

for the patches, bug reports and new ideas, and for helping others by answering questions on our mailing list.

Our Donators

for many hours of joy with the music they sent us

[Prev](#)

Preface

[Up](#)

[Home](#)

[Next](#)

Chapter 1. Introduction

Chapter 1. Introduction

[Prev](#)

[Next](#)

Chapter 1. Introduction

Table of Contents

[1.1. Overview](#)

[1.2. TortoiseGitMerge's History](#)

1.1. Overview

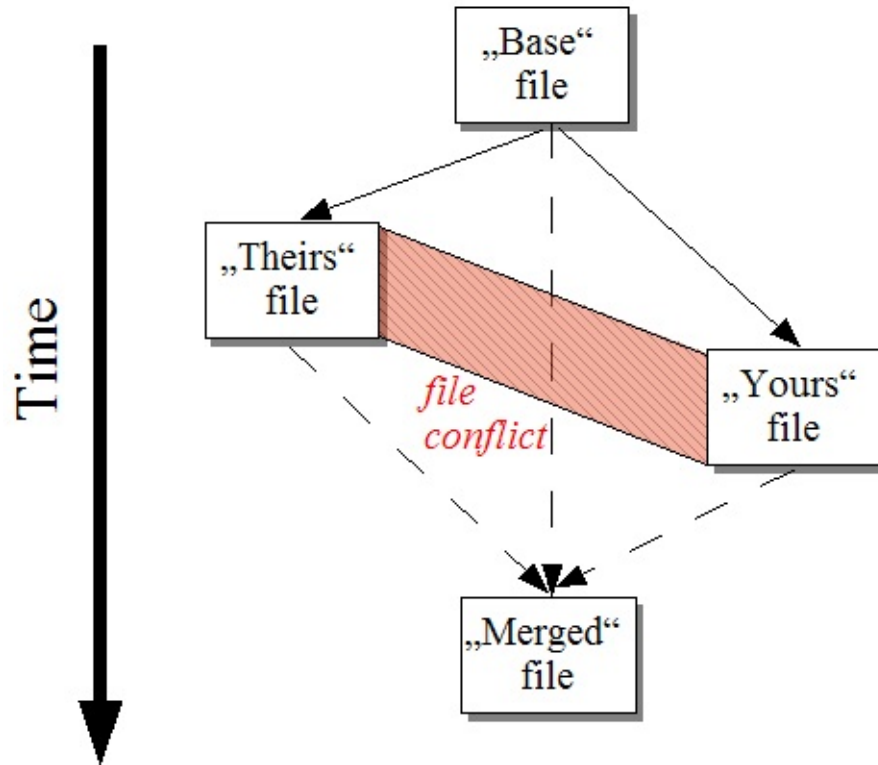
TortoiseGitMerge is a free/open-source application. It lets you see differences in text files, merge those changes and even review and apply unified diff files, often called *patches*.

While working on text files, e.g. source files in your favourite programming language, or html/xml files for your documentation or website, you will often have a situation where you need to compare different versions of those files. Sometimes you get a different version from someone else, sometimes you just want to see the changes you've made.

If you're working with a version control system (e.g. Git) then you sometimes get *conflicts* when you update your working copy. This happens if someone else changed the same parts of the file you're currently working on as you did. Then you have to resolve those conflicts manually. This is where TortoiseGitMerge can help you.

The following diagram shows you the relationships between the files involved in a conflict:

Figure 1.1. File Conflict



A conflict can also occur if you try to apply an outdated patch file. In such cases, without TortoiseGitMerge, you would either have to ask the person you got that patch file from for a current version or try to apply that patch file manually.

But now with TortoiseGitMerge this isn't necessary anymore - at least not if you're working with a version control system like Git. TortoiseGitMerge parses the patch file for the revision/version the patch was created for and automatically tries to fetch that specific version from your source-control. Then it applies the patch and lets you review both your changes to the file, and theirs. Then you can decide which changes you want to keep.

[Prev](#)

2. Acknowledgments

[Home](#)

[Next](#)

1.2. TortoiseGitMerge's
History

1.2. TortoiseGitMerge's History
Chapter 1. Introduction

[Prev](#)

[Next](#)

1.2. TortoiseGitMerge's History

TortoiseGitMerge is based on TortoiseMerge as TortoiseGit is based on TortoiseSVN. TortoiseSVN ships TortoiseMerge so we do with TortoiseGit (with a Git enhanced version).

[Prev](#)

[Up](#)

[Next](#)

Chapter 1. Introduction

[Home](#)

Chapter 2. Basic Concepts

Chapter 2. Basic Concepts

[Prev](#)

[Next](#)

Chapter 2. Basic Concepts

Table of Contents

[2.1. Viewing and Merging Differences](#)

[2.2. Editing Conflicts](#)

[2.3. Applying Patches](#)

TortoiseGitMerge has several different uses:

- Viewing the difference between two files and merging changes into one of them, or removing unwanted changes.
- Editing conflicts between local changes and changes in the Git repository following an update.
- Applying patch files and reviewing them.

2.1. Viewing and Merging Differences

In this mode you are comparing two files. The file in the left pane is considered to be the original file (sometimes referred to as *Theirs*, and the file in the right pane is the modified file (sometimes referred to as *Mine*).

You can make simple line-based changes to the file in the right pane which include:

- Reverting changed lines back to the text shown in the left pane.
- Using a combination of both blocks, either *Theirs* before *Mine* or *Mine* before *Theirs*.

You can also edit the file in the right pane just as you would in a text editor. Such lines are marked using a pencil icon. Please note that if you want to make any of the line/block-based changes described above, it is better to do those first since once you start editing the file yourself it becomes impossible for TortoiseGitMerge to keep track of the relationship to the original files.

[Prev](#)

1.2. TortoiseGitMerge's
History

[Home](#)

[Next](#)

2.2. Editing Conflicts

2.2. Editing Conflicts

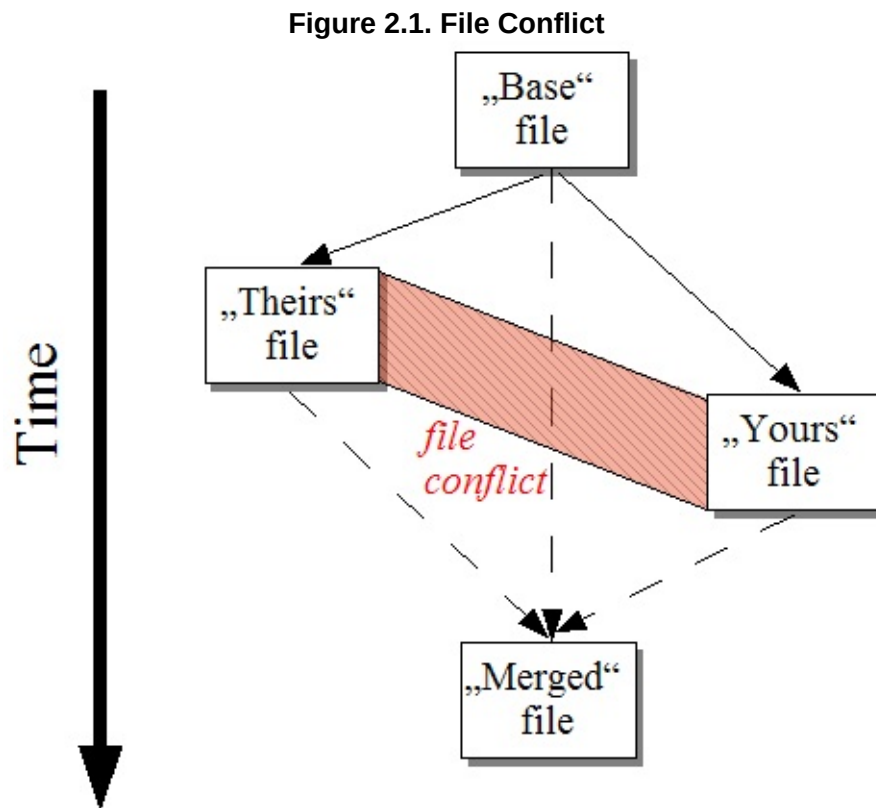
[Prev](#)

Chapter 2. Basic Concepts

[Next](#)

2.2. Editing Conflicts

This is sometimes referred to as a three-way merge, and is shown in three panes. However there are actually four files involved. The file which is not shown is the common base file, the last common ancestor of the two files which are now in conflict. The relationships between the three files are explained in the diagram below:



The base file represents the oldest version of a file, from where *You* and *They* start making changes. *Mine* represents the base file with all the changes *you* made, and *Theirs* is the file with all the changes *someone else* made to the file. The left pane shows the changes in *Theirs* relative to the base file and the right pane shows the changes in *Mine* relative to the base file. The bottom pane is the output file which is where you are trying to resolve the conflicts.

In conflict resolution view, you can choose to use blocks from *Mine* or

Theirs or both. But in this case, the changes are shown in the bottom pane.

[Prev](#)

Chapter 2. Basic Concepts

[Up](#)

[Home](#)

[Next](#)

2.3. Applying Patches

2.3. Applying Patches
Chapter 2. Basic Concepts

[Prev](#)

[Next](#)

2.3. Applying Patches

A patch file is a Git or Subversion unified diff file, which contains the information required to apply changes to a set of files. The patch may have been supplied by another developer so that you can see changes he has made and possibly commit them to the repository. Or it may have been generated internally by TortoiseGit when comparing two folders. This happens when you compare a repository revision with your working copy folder, or if you compare two different repository revisions, or if you compare two different repository paths.

In either case TortoiseGitMerge will show a small window listing the files included in the patch. By double clicking on one of these files you fetch the relevant file and apply the changes. The left pane shows the original file content and the right pane shows it after the patch is applied.

You can edit the file in the right pane exactly as you would in compare/edit mode.

[Prev](#)

2.2. Editing Conflicts

[Up](#)

[Home](#)

[Next](#)

Chapter 3. Using
TortoiseGitMerge

Chapter 3. Using TortoiseGitMerge

[Prev](#)

[Next](#)

Chapter 3. Using TortoiseGitMerge

Table of Contents

- 3.1. Viewing Modes
 - 3.1.1. Viewing / Merging
 - 3.1.2. Applying Patches
- 3.2. Buttons and Other Controls
- 3.3. Line Status Icons
- 3.4. Merging / Editing Conflicts
- 3.5. Open Files
 - 3.5.1. Viewing / Merging
 - 3.5.2. Applying Patches
- 3.6. Settings
 - 3.6.1. Main Settings Page
 - 3.6.2. Colour Settings Page

3.1. Viewing Modes

TortoiseGitMerge has three main viewing modes: one-pane, two-pane and three-pane view. One/two-pane view is used to view changes and three-pane view is used to resolve conflicts.

3.1.1. Viewing / Merging

Figure 3.1. One Pane View

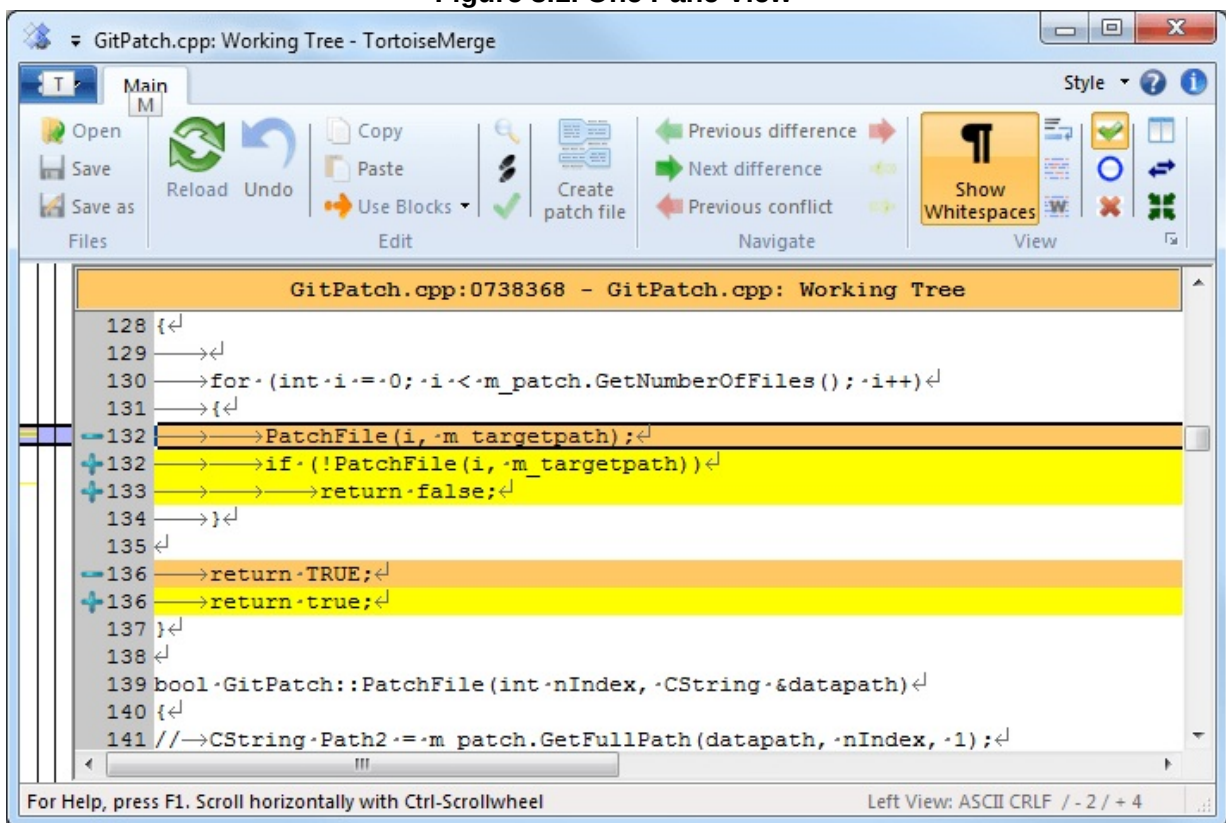
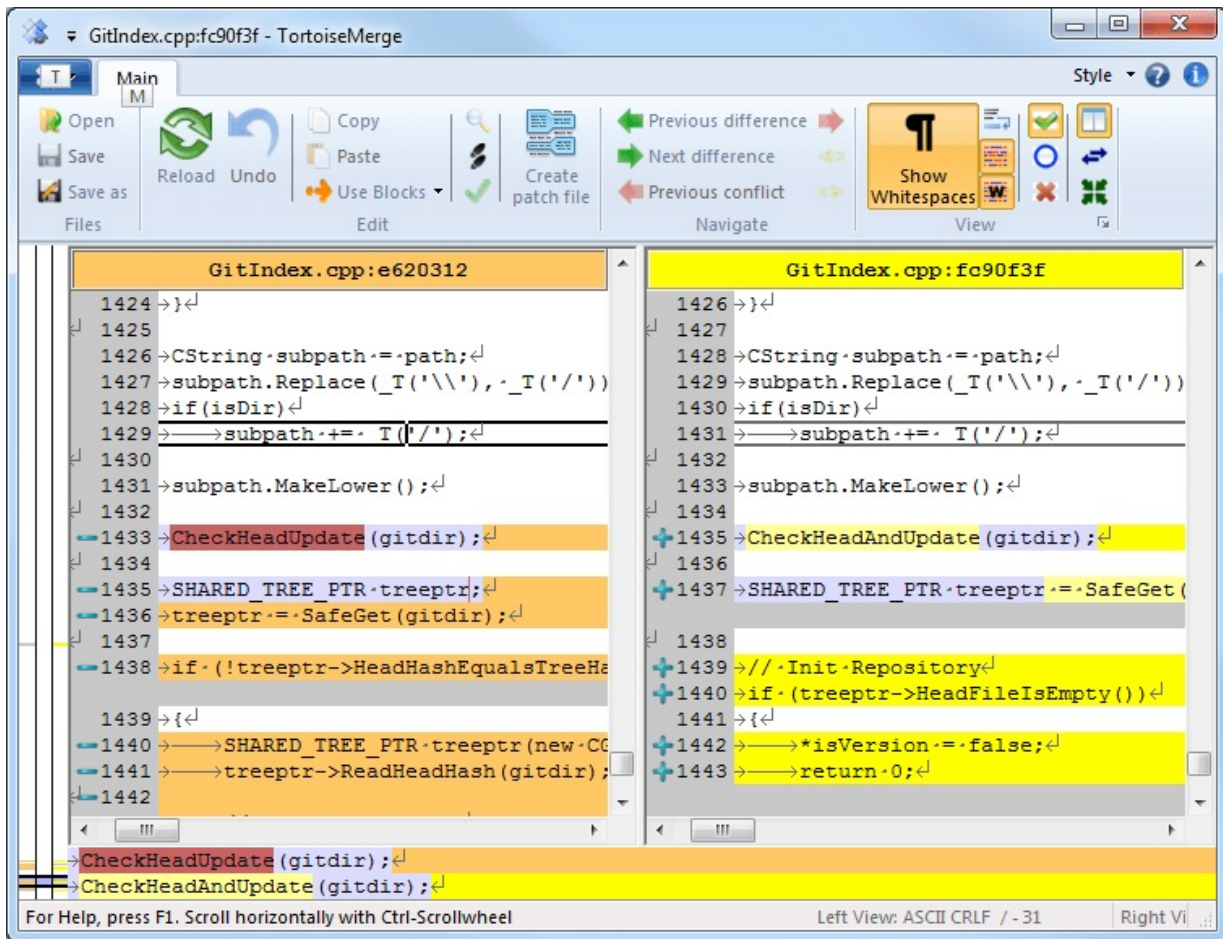


Figure 3.2. Two Pane View



The two pane view has some features which are not available in the one pane view:

- Changes inside the modified lines are shown in different colors. Added string parts are shown with a lighter color, but you can of course configure the colors used here. Removed parts are indicated with a dark brown vertical line in the string. Check out the screenshot above to see how this works.
- Code reorganization usually means a lot of changes in whitespaces (space, tab, newlines) but no actual code change. For example, you split up a very long line into several lines, or you sometimes compact several lines together into one.

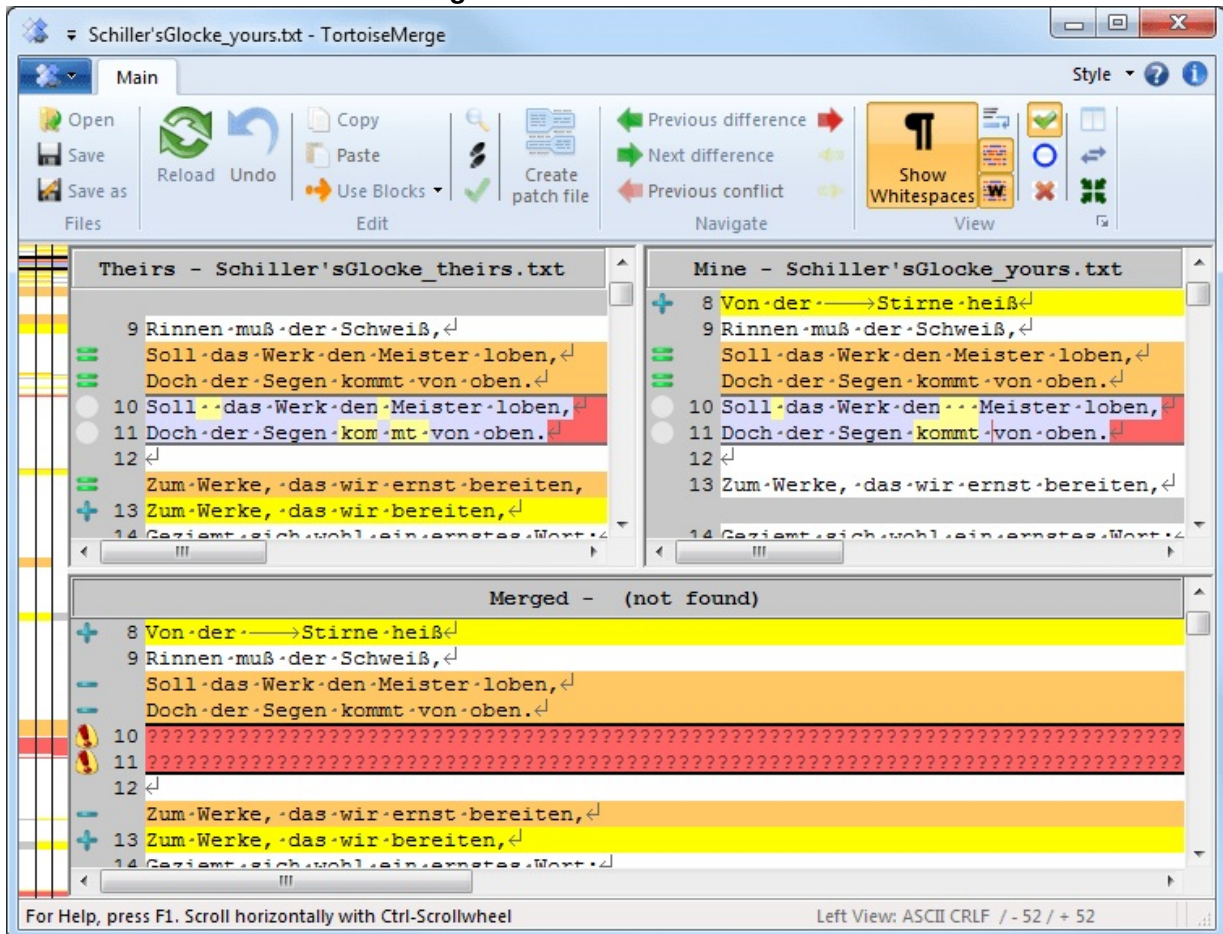
Such changes are marked with a white circle symbol on the left side

of the views. If you see such a white circle, you know immediately that no real code change is there and you don't have to check the changed block further.

- Hand editing of the file in the right pane is possible in two-pane view. Such changes are marked with a pencil symbol. Hand editing of the file in the left pane is also possible, only when **Enable Edit** is pressed when the left pane is active.

If you want to compare/merge three files, TortoiseGitMerge will show you the differences in a three pane view. This view is also used if you need to resolve conflicted files.

Figure 3.3. Three Pane View



The left pane shows you the differences between *Their* file and the *Base*

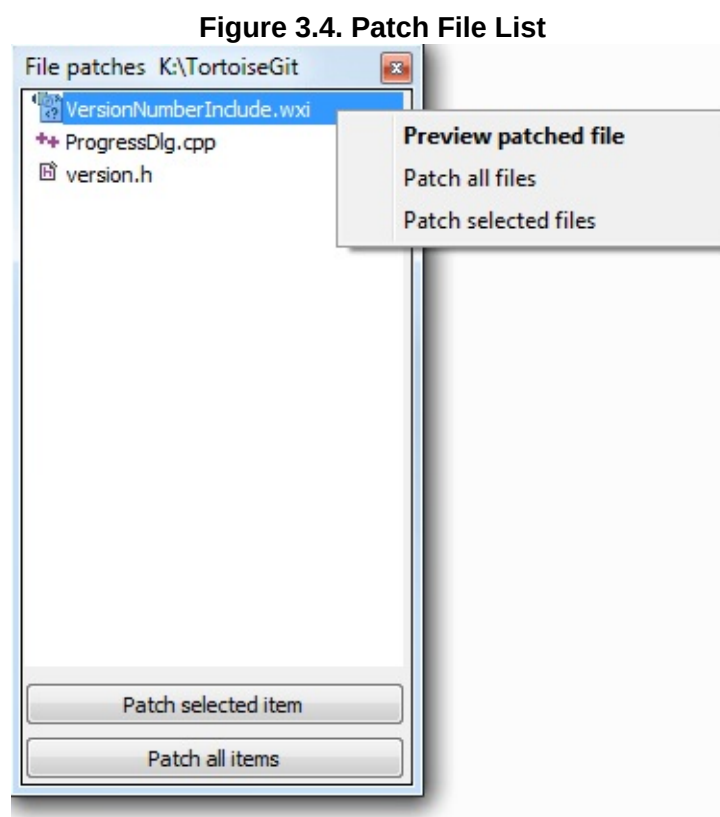
file, while the right pane shows you the differences between *Mine* file and the *Base* file. The bottom pane shows you the result of merging *Base*, *Mine* and *Theirs* with possible conflicts.

If you hover the mouse over the pane title, a tooltip will show the filenames used for the diff in each pane.

Hand editing of the file in the left pane or right pane is also possible, only when **Enable Edit** is pressed when that pane is active.

3.1.2. Applying Patches

After TortoiseGitMerge parses the patch file it will show you a small window with all the files which have changes according to the patch file.



If the filename is shown in black, then the patch can be applied without any problems. That means the file is not outdated according to the patch. However, if the filename is shown in red, then the patch can't get applied

directly because you already changed that file.

The patch file window has a context menu which allows you to preview the effect of the patch on the current file (apply without saving), to apply and save the changes for the selected file, or to apply and save changes to *all* files in the list. The double click action is to preview.

[Prev](#)

2.3. Applying Patches

[Home](#)

[Next](#)

3.2. Buttons and Other
Controls

3.2. Buttons and Other Controls

[Prev](#)

Chapter 3. Using TortoiseGitMerge

[Next](#)

3.2. Buttons and Other Controls

Depending on your setting, you either see a toolbar or a ribbon with many buttons. The buttons all show a tooltip explaining their function when you hover the mouse pointer over them.

On the left side of the window is a locator bar. This provides a quick visual reference as to where the changes lie within the file. The bar has three columns. The left column refers to the left pane, the right column to the right pane, and the centre column to the bottom pane (if present). In one-pane view only the left column is used. The locator bar can also be used as a scroll bar to scroll all the windows simultaneously.

If you double click on a word then every occurrence of that word will be highlighted throughout the document, both in the main panes and the locator bar. Double click on the word again to remove the highlighting.

If you click in the left margin, or if you triple click within a line, that whole line will be selected.

Below the bottom window is the status bar. This shows the number of lines added and deleted in `Theirs` and `Mine`, and the number of unresolved conflicts remaining.

The status bar also contains combo box controls which indicate how the files are handled and treated:

Encoding

The encoding specifies how the characters in the views are loaded/saved and shown. The most common encoding in English is ASCII (which means the local encoding of the OS language), but you can change this to be UTF8, UTF16LE, UTF16BE, UTF32LE and UTF32BE, both with or without a byte order mark (BOM).

Line Endings

The most common line endings on Windows is CRLF, but you can change the line endings to whatever you like. Note that if you change the line endings, then *all* line endings in the whole file will change, even if when loaded the line endings were not all the same.

Tabs

The option at the top of the combo box menu indicates whether tabs or spaces are inserted when you press the tab key. The *smart tab char* option if enabled uses an algorithm to determine whether one or the other is best used.

The tab size specifies how many space chars are inserted when editing and pressing the tab char, or how many chars the next word is indented when a tab char is encountered.

[Prev](#)

[Up](#)

[Next](#)

Chapter 3. Using
TortoiseGitMerge

[Home](#)

3.3. Line Status Icons

3.3. Line Status Icons

[Prev](#)

Chapter 3. Using TortoiseGitMerge

[Next](#)

3.3. Line Status Icons

Changed lines are marked with an icon to indicate what type of change has occurred.



A line has been added.



A line has been removed.



A change has been undone by reverting to the original content of the line.



This line contains only whitespace changes. Where several consecutive lines are marked, the paragraph may have been re-wrapped, causing words to shuffle onto adjacent lines.



A line has been edited by hand, using TortoiseGitMerge as a text editor.



This line is in conflict.



This line is conflicted, but the effect is hidden by whitespace or line-ending settings.



This line is detected as being moved from / to another location.

3.2. Buttons and Other
Controls

[Home](#)

3.4. Merging / Editing
Conflicts

3.4. Merging / Editing Conflicts
Chapter 3. Using TortoiseGitMerge

[Prev](#)

[Next](#)

3.4. Merging / Editing Conflicts

TortoiseGitMerge not only *shows* you the differences between files but also lets you resolve conflicts or apply changes.

If you're in two pane view, then you can only edit the file in the right pane (Mine). To apply changes made in the left file (Theirs), **right click** on the changed lines and select **Context Menu** → **Use text block from 'theirs'** . Then the changes from the left file are added to the right file.

Sometimes you actually want both text blocks, and the context menu also offers you **Context Menu** → **Use both text blocks (this one first)** and **Context Menu** → **Use both text blocks (this one last)** .

You can also edit the output file just as you would in a text editor. Such lines are marked using a pencil icon. Please note that if you want to make any of the line/block-based changes described above, it is better to do those first since once you start editing the file yourself it becomes impossible for TortoiseGitMerge to keep track of the relationship to the original files.

If you're in three pane view (sometimes called *merge view*) you can only edit the file in the bottom view (Merged). As in two pane view, you can **right click** on conflicted lines and either select **Context Menu** → **Use text block from 'theirs'** or **Context Menu** → **Use text block from 'mine'** . In addition, if you want *both* blocks, you can select **Context Menu** → **Use text block from 'mine' before 'theirs'** or **Context Menu** → **Use text block from 'theirs' before 'mine'** . According to the command you've selected, the changes are used in the resulting Merged file.

Sometimes a file will be marked as conflicted in Git, yet when you view it using TortoiseGitMerge there are no conflicts shown. This may be due to the whitespace handling you have chosen. If you choose to ignore line-endings or whitespace changes, those lines will be marked using the *Conflict-Ignored* icon. To resolve the conflict you still need to pick which

version you want to use.



Important

Note that if you use TortoiseGitMerge on the same files again, any changes to your working copy, whether in TortoiseGitMerge, or by hand-editing, *will be discarded* and the file will appear as it did when conflict-editing first started.

[Prev](#)

3.3. Line Status Icons

[Up](#)

[Home](#)

[Next](#)

3.5. Open Files

3.5. Open Files

[Prev](#)

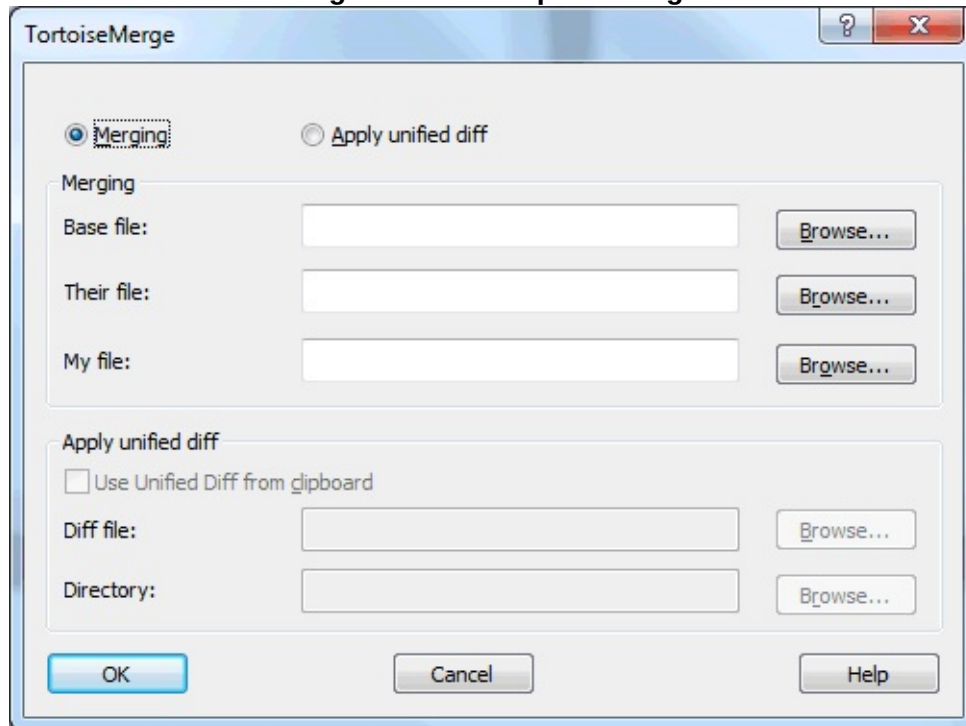
Chapter 3. Using TortoiseGitMerge

[Next](#)

3.5. Open Files

When you start TortoiseGitMerge without any command line switches then you have to open the files manually, using **File** → **Open** .

Figure 3.5. The Open Dialog



The first thing you have to do is to decide whether you just want to compare/merge files, or whether you want to apply a patch file. Depending on what you choose, the corresponding edit boxes and browse buttons are activated.

3.5.1. Viewing / Merging

If you want to compare / merge files you have to set at least two of the three possible paths for `Base`, `Mine` and `Theirs`. If you select only two files, then TortoiseGitMerge will show you the differences between those two files, either in a two pane view or in a one pane view.

If you want to merge three files, TortoiseGitMerge will show you the

differences in a three pane view. This view is generally used if you need to resolve conflicted files. The output file is not named in this case and you will have to use the **File** → **Save As...** to save the results.

3.5.2. Applying Patches

If you want to apply a patch file you have to set both the path to the patch file itself and the path to the folder where the patch file should be applied.



Caution

Currently, only patch files in *Unified Diff Format* are supported. And only files which were generated from a Git working copy. Other formats like patch files generated by CVS are currently not supported!

[Prev](#)

3.4. Merging / Editing
Conflicts

[Up](#)

[Home](#)

[Next](#)

3.6. Settings

3.6. Settings

[Prev](#)

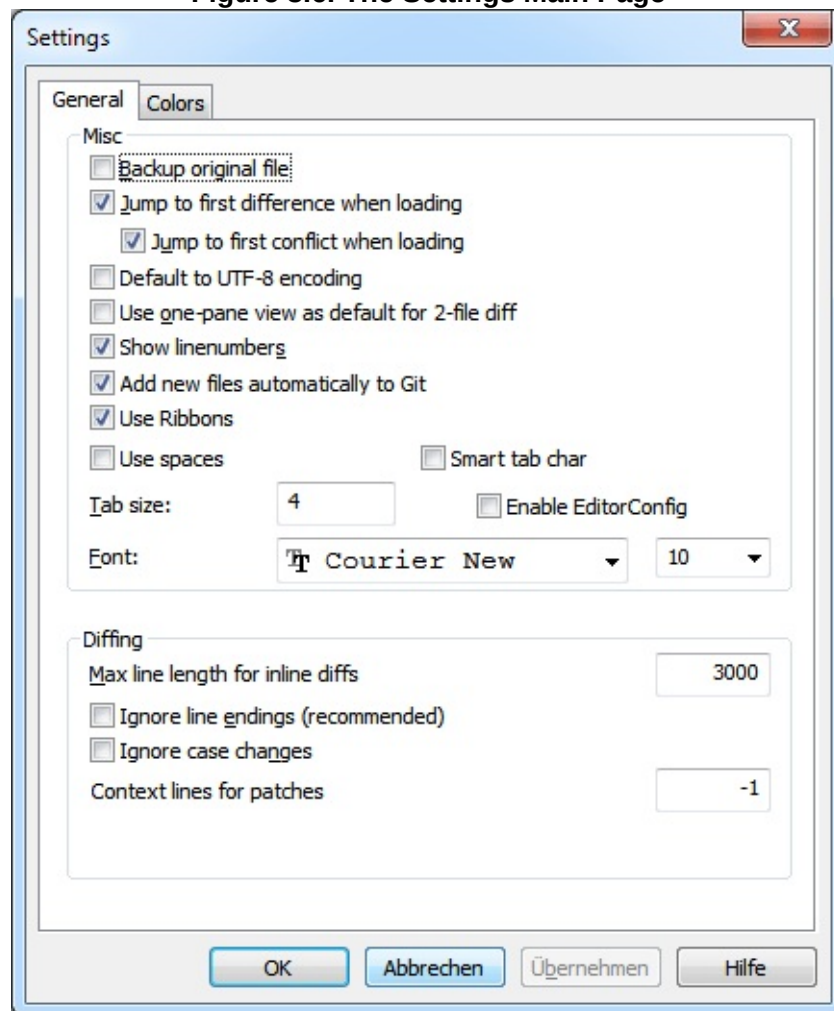
Chapter 3. Using TortoiseGitMerge

[Next](#)

3.6. Settings

3.6.1. Main Settings Page

Figure 3.6. The Settings Main Page



Most of the options here are self-explanatory, but a few points need clarifying.

Backup original file renames the original file in the WC to `filename.bak` before saving the modified version.

Default to UTF-8 encoding when set, ANSI files are loaded as UTF-8 encoded and saved as such when edited.

Use ribbons when set, ribbons interface is used (looks like Office 2007). When unset, traditional toolbar interface is used. Default is set.

Use spaces when set, pressing tab key inserts spaces. Default is unset (tab char is used).

Smart tab char when set, pressing tab key inserts tab/spaces based on adjacent lines/characters. Default is unset.

EditorConfig when set, it will detect `.editorconfig` files. Currently, it supports `indent_style(space/tab)` and `indent_size` properties. See [EditorConfig](#) website for more details.

Max line length for inline diffs TortoiseGitMerge can get slow when showing inline diffs for very long lines. Because of that only lines that are shorter than 3000 chars are shown with inline diffs. You can change this value [here](#).

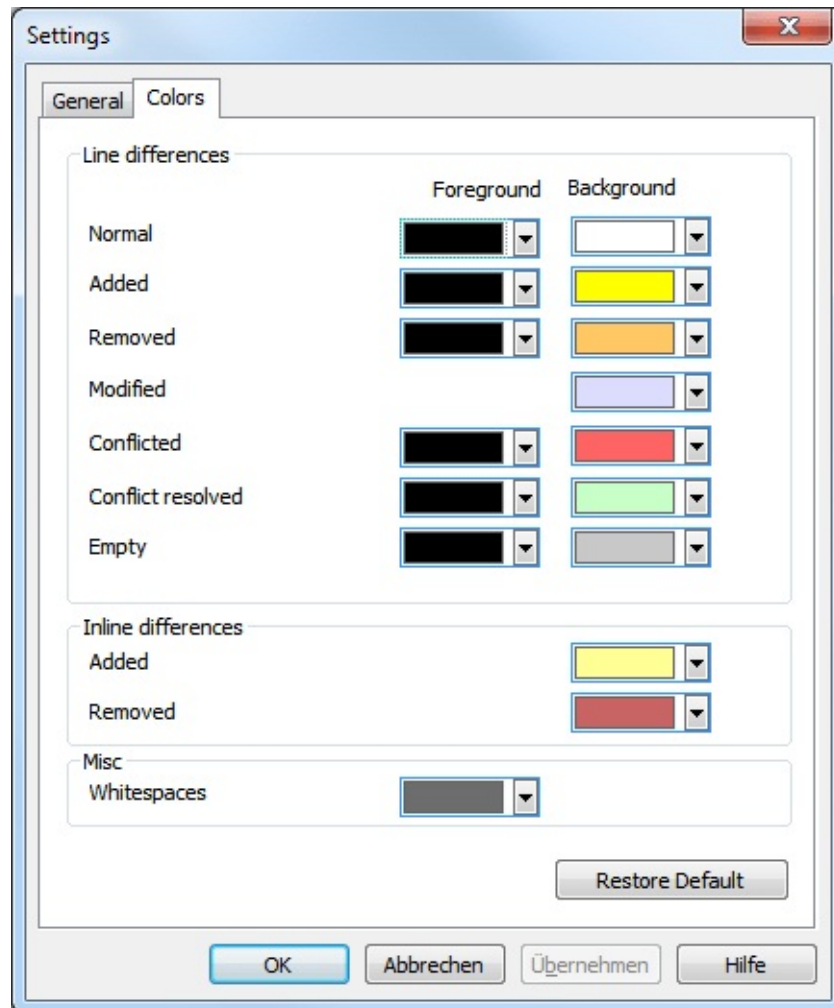
Ignore line endings hides changes which are due solely to difference in line-end style.

Ignore case changes hides changes which are due solely to case changes within the text. This can be useful with apps such as Visual Basic, which changes case in variables without warning.

Context lines for patches specifies how many context lines for patch files generated from TortoiseGitMerge. The default value is -1, which means context lines number is controlled by `git` or `diff.context` config.

3.6.2. Colour Settings Page

Figure 3.7. The Settings Color Page



This dialog allows you to select the background color coding used to highlight the different line changes.

Normal

All lines which are unchanged, or where changes are hidden.

Added

Lines which have been added.

Removed

Lines which have been deleted.

Modified

Lines which have relatively small changes, and are shown using inline diff. This colour is used for the *unchanged* portion of the line content. Changed portions will be shown using the inline added and

deleted colours described below. If Colour code in-line changes is not enabled, this colour will not be used and changed lines will always be shown as replacements.

Conflicted

Where the same line has been changed in both files.

Conflict resolved

Where the same line has been changed in both files, and you have now selected which version should be used.

Empty

Where lines have been added in the opposite pane, and no such line existed in this pane.

Inline added text

When inline diffs are shown, added text is shown in this colour.

Inline removed text

When inline diffs are shown, deleted text is shown in this colour.

Misc whitespaces

Characters used to indicate Whitespace are shown in a different colour from normal text.

[Prev](#)

[Up](#)

[Next](#)

3.5. Open Files

[Home](#)

Appendix A. keyboard
shortcuts

Appendix A. keyboard shortcuts

[Prev](#)

[Next](#)

Appendix A. keyboard shortcuts

Table of Contents

[A.1. Keyboard shortcuts](#)

List of keyboard shortcuts and commands.

A.1. Keyboard shortcuts

Ctrl-Q, Ctrl-W, Escape

Quit the program

Ctrl-C

Copy the selected text to the clipboard

Ctrl-X, Shift-Del

Cut the selected text to the clipboard

Ctrl-V, Shift-Insert

Paste the selected text from the clipboard

Ctrl-Z, Alt-Backspace

Undo the last edits

Ctrl-F

Open the Find dialog for text searches and replaces

Ctrl-O

Open files to diff/merge

Ctrl-S

Save the changes

Ctrl-Shift-S

Save as...

F7

Go to next difference

Shift-F7

Go to previous difference

F8

Go to next conflict

Shift-F8

Go to previous conflict

Ctrl-D

Toggle between one-pane diff and two-pane diff

Ctrl-R

Reload the files and revert all changes made

Ctrl-T

Toggles between showing whitespaces or not

Ctrl-L

Toggles between collapsing unchanged sections or not

Ctrl-P

Toggles between line wrapping

Ctrl-G

Go to line

Ctrl-A

Select all text

Ctrl-P

Toggles between line wrapping

Ctrl-U

Switches views

Ctrl-mousewheel

Scroll the display left/right

Ctrl-Tab

Switch between left/right/bottom view

[Prev](#)

3.6. Settings

[Home](#)

[Next](#)

Appendix B. Automating
TortoiseGitMerge

Appendix B. Automating TortoiseGitMerge

[Prev](#)

[Next](#)

Appendix B. Automating TortoiseGitMerge

Table of Contents

[B.1. TortoiseGitMerge Command Line Switches](#)

TortoiseGitMerge can be started with command line parameters to avoid having to go through the `Open` dialog to select the files yourself. This is useful also if you want to use TortoiseGitMerge from another application.

B.1. TortoiseGitMerge Command Line Switches

Most switches require additional information like a path or some other string. In those cases, append an ':' to the switch and put the string/path after it. Example:

```
/base:"c:\folder\my base file.txt"
```

Table B.1. List of available command line options

Command	Description
/?	Shows a dialog box with the most important command line switches.
/help	The same as ?.
/base	Specifies the <i>base</i> file used in three way diffs. This is the common ancestor of the files being diffed, although it is not shown in a separate window. For two way diffs, this is the left file.
/basename	The name of the base file. This is shown in the view title instead of the file path. For three way diffs it is shown in a tooltip for the view title.
/basereflectedname	The name to use for editorconfig templates.
/theirs	Specifies the <i>theirs</i> file used in three way diffs, displayed in the left pane.
/theirsname	The name of the theirs file. This is shown in the view title instead of the file path.
/theirsreflectedname	The name to use for editorconfig templates.
/mine	Specifies the <i>mine</i> file used in three way diffs, displayed in the right pane. For two way diffs, this is the right file.
/minename	The name of the mine file. This is shown in the view title instead of the file path.
/minereflectedname	The name to use for editorconfig templates.
/merged	Specifies the resulting <i>merged</i> file used in three way diffs. This is the file path where the result of the merge/conflict resolving is saved. If this is not set, then TortoiseGitMerge will ask the user where to save the result.
/mergedname	The name of the merged file. This is shown in the view title instead of the file path.
/mergedreflectedname	The name to use for editorconfig templates.
/patchpath	The path where a patch should be applied to. If you don't set this path, then TortoiseGitMerge will try to find the path itself to match the paths in the patch file, but that can take <i>very long</i> .

/saverequired	If specified, forces TortoiseMerge to ask to save the file before exiting, even if the user does not modify the files.
/saverequiredonconflicts	If specified, forces TortoiseMerge to ask to save the file before exiting if there are conflicts found, even if the user does not modify the files.
/patchoriginal	The name of the original file to patch. Used for the view title.
/patchpatched	The name of the resulting patched file. Used for the view title.
/diff	The path to the patch/diff file to apply to a directory.
/oneway	Forces TortoiseGitMerge to start with the one-way view instead of the view the user specified in the settings.
/reversedpatch	Switches the left and right view of the specified two files to diff.
/createunifieddiff	Creates a unified diff file (patch file) of two files specified with /origfile:"path_to_original_file" and /modifiedfile:"path_to_modified_file". The target path is set with /outfile:"path_to_resulting_patchfile". If /outfile is not set, a file save dialog is shown so the user can choose the location to save the patch file. Note: If /createunifieddiff is set, all other parameters are ignored.
/line	Specifies a line number to jump to after loading the files.
/readonly	Prevents the file from being edited. That means the editing capabilities of TortoiseGitMerge are disabled.

You can also supply simple filenames on the command line for compatibility with other diff programs. In this simplified form the command line is

```
TortoiseGitMerge BaseFilePath MyFilePath [ TheirFilePath ]
```

If two files are given they will be compared with each other. If three files are given, the first is taken as the BASE file, and the other two are compared with it in a three-way diff.

[Prev](#)

Appendix A. keyboard shortcuts

[Home](#)

[Next](#)

Glossary

Glossary

[Prev](#)

Glossary

Add

A Git command that is used to add a file to your working tree. The new items are added to the repository when you commit.

BASE revision

This is the common ancestor's version of a conflicted file.

Blame

This command is for text files only, and it annotates every line to show the repository revision in which it was last changed, and the author who made that change. Our GUI implementation is called TortoiseGitBlame and it also shows the commit date/time and the log message when you hover the mouse of the revision number.

Branch

A term frequently used in revision control systems to describe what happens when development forks at a particular point and follows 2 separate paths. You can create a branch off the main development line so as to develop a new feature without rendering the main line unstable. Or you can branch a stable release to which you make only bug fixes, while new developments take place on the unstable trunk. In Git a branch is implemented as a “pointer to a revision”.

Cleanup

Remove untracked files from the working tree.

This is different to TortoiseSVN cleanup

Clone

A Git command which creates a local working tree in an empty

directory by downloading a remote repository.

Commit

This Git command is used to pass the changes in your local working tree back into the repository, creating a new repository revision.

Conflict

When changes from the repository are merged with local changes, sometimes those changes occur on the same lines. In this case Git cannot automatically decide which version to use and the file is said to be in conflict. You have to edit the file manually and resolve the conflict before you can commit any further changes.

Copy

In a Git repository you can manually create a copy of a single file or an entire tree w/o problems.

Delete

When you delete a versioned item (and commit the change) the item no longer exists in the repository after the committed revision. But of course it still exists in earlier repository revisions, so you can still access it. If necessary, you can copy a deleted item and “resurrect” it complete with history.

Diff

Shorthand for “Show Differences”. Very useful when you want to see exactly what changes have been made.

Export

This command produces an compressed archive of all versioned files (of a specific revision).

GPO

Group policy object

HEAD

HEAD is a synonym for the currently active branch (to be more precise in Git HEAD can also be so-called "detached" and directly pointing to a commit instead of a branch).

History

Show the revision history of a file or folder. Also known as "Log".

Log

Show the revision history of a file or folder. Also known as "History".

Merge

The process by which changes from the repository are added to your working tree without disrupting any changes you have already made locally. Sometimes these changes cannot be reconciled automatically and the working tree is said to be in conflict.

Merging happens automatically when you pull changes, cherry-pick, or rebase. You can also merge specific changes from another branch using TortoiseGit's Merge command.

Patch

If a working tree has changes to text files only, it is possible to use Git's Diff command to generate a single file summary of those changes in Unified Diff format. A file of this type is often referred to as a "Patch", and it can be emailed to someone else (or to a mailing list) and applied to another working tree. Someone without commit access can make changes and submit a patch file for an authorized committer to apply. Or if you are unsure about a change you can submit a patch for others to review.

Pull

This Git command pulls down the latest changes from the repository into your working tree, merging any changes made by others with local changes in the working tree.

Repository

A repository is a place where data is stored and maintained. A repository can be a place where multiple databases or files are located for distribution over a network, or a repository can be a location that is directly accessible to the user without having to travel across a network. Git is a distributed version control system - each working tree contains its own repository (in the *.git* folder). A Git repository does not require network to work with most operations. Network is required only when you need to synchronize changes with remote repositories.

Resolve

When files in a working tree are left in a conflicted state following a merge, those conflicts must be sorted out by a human using an editor (or perhaps TortoiseGitMerge). This process is referred to as “Resolving Conflicts”. When this is complete you can mark the conflicted files as being resolved, which allows them to be committed.

Revert

If you have made changes and decide you want to undo them, you can use the “revert” command to go back to the version from HEAD.

Revision

Every time you commit a set of changes, you create one new “revision” in the repository. Each revision represents the state of the repository tree at a certain point in its history. If you want to go back in time you can examine the repository as it was at a specific revision.

In another sense, a revision can refer to the set of changes that were

made when that revision was created.

SVN

A frequently-used abbreviation for Subversion.

TortoiseGit provides git-svn interoperability. You can fetch partial or whole history from an SVN remote and store as a local git repository. This allows you to browse the history and create commits locally. You can finally commit your changes to an SVN remote.

Switch/Checkout

Updates all files in the working tree to a specific version. This is normally used for switching/checking out branches.

Update

The corresponding command for the SVN update command is *Pull*.

Working Copy

See “Working Tree”.

Working Tree

This is your local “sandbox”, the area where you work on the versioned files, and it normally resides on your local hard disk. You create a working tree by doing a “Clone” of a repository, and you feed your changes back into the repository using “Commit”.

[Prev](#)

Appendix B. Automating
TortoiseGitMerge

[Home](#)
