



Thank you for using Super Finder!
We hope that be useful for you and will remain satisfied with this utility.

Description:

Super Finder is a powerful replacement for Windows™ built-in search. With Super Finder, you can search files, folders and other data efficiently and easily.

Super Finder can be used for locating files or folders in the file system and directory tree with an extensive set of criteria.

Files or folders can be located by name, location, size, date and time, or content of the file.

All versions include these advanced features:

- 💡 More search speed (compared with standard search).
- 💡 "True" search text in file (also Unicode!).
- 💡 Search for hexadecimal pattern in file.
- 💡 Full wild card support.
- 💡 Smart Search: allow to search for similar names without type the asterisk (*) and the question mark (?) wild card characters at the begin, end or middle of partial file name or extension to search.
- 💡 Exclusion list, by file extensions or full/partial name.
- 💡 Selectable search also for folders.
- 💡 Remember all last settings (selectable).
- 💡 Shell integration (right-click contextual menu on drives and folders).

- 💡 Drag & Drop (or Copy) of found files.
- 💡 Right click on found files: activate the Explorer contextual popup menu.
- 💡 One-click file operations: Open, Copy, Delete, Explore, Rename, Properties.
- 💡 Inspired from simple layout of old (but good) Windows NT™ built-in search.
- 💡 Automatic (and/or manual) check for program updates.
- 💡 Multilanguage interface: English, Italian, Romanian, Dutch, French,

Spanish, Galician, Croatian, German, Simplified Chinese, Russian, Slovak, Arabian, Traditional Chinese, Portuguese (Brazil), Serbian, Polish, Ukrainian, Valencian, Japanese, Hungarian, Swedish and Vietnamese. Read [here](#) if you want to translate into other languages or dialects.

- 💡 Character Set management to support translation into non-Latin languages (for example: Russian, Chinese, etc.).
- 💡 Free support [forum](#) for help, bugs report or requests.

Privileged Users version has these added benefits:

- 💡 Multiple items selection. With this feature you can delete, copy, show properties, open (execute), explore and drag and drop (copy) of multiple files.
- 💡 MRU (most recent used) management for all edit fields (file name, excluded files, search pattern and path).
- 💡 Capability to use "?" wildcard for search contents.
- 💡 Recycle Bin Deep Scan option.
- 💡 Compact View mode: for low resolution monitors... or simply to reduce the screen used area.
- 💡 Changeable color themes (Skins).
- 💡 Program activation by pressing customizable hot key on keyboard.

Awards:

Super Finder has received some [awards](#) from various freeware publishing sites.

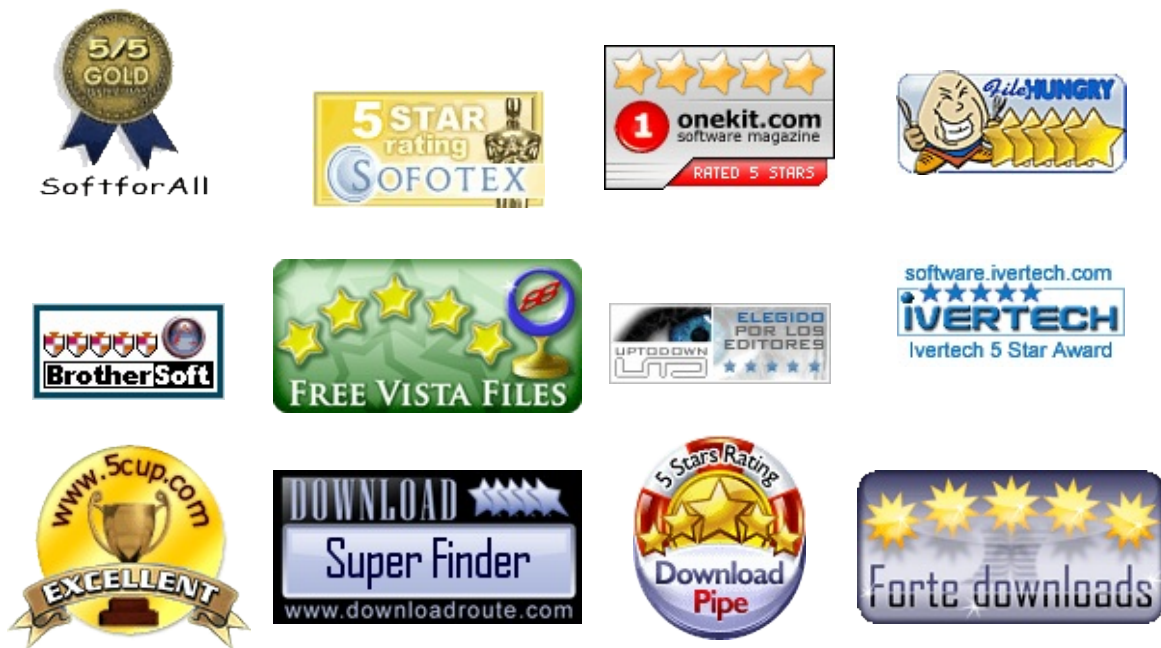
Continue to:

- [Basic guide](#)
- [Advanced guide](#)
- [Search examples](#)
- [Contacts](#)

If you think that my work is useful for you, and want to support his future development, consider to [donate](#) (how much do you want) through [PayPal](#).

 Thanks! - [FSL - FreeSoftLand](#)

Some "Five stars" awards Super Finder has received from freeware publishing sites:



Some "Clean awards":



If you think that my work is useful for you, and want to support his future development, consider to [donate](#) (how much do you want) through [PayPal](#).

😊 Thanks! - [FSL - FreeSoftLand](#)

Languages currently shared with Super Finder:

	Arabic	Awadh A Al-Ghaamdi
	Chinese, Simplified	Heat.ray
	Chinese, Traditional	Chu
	Croatian	Ljupko Milović
	Dutch	Peter Zwitter
	English	FSL
	French	EasyFrog
	Galician	Xosé Antón Vicente Rodríguez
	German	W. J. Schramm
	Hungarian	Ronyn
	Italian	FSL
	Japanese	Tilt
	Polish	Zbigniew Góra
	Portuguese (Brazil)	Gustavo Carvalho
	Romanian	LiZaRd
	Russian	Molotov
	Serbian	Dootzky
	Slovak	Laki
	Spanish	HispánicoWeb
	Swedish	Örjan Toräng
	Ukrainian	Boyco
	Valencian	Vjatv
	Vietnamese	Super_VIP_IT

Many thanks to these FreeSoftLand friends for the translations.

How to translate Super Finder:

If you can translate Super Finder into your language, follow these steps: (this example for "Portuguese")

- Copy the "Translation.lng" file (located into the "Languages.lng" directory) renaming into your language.

e.g. "Translation.lng" à "Portuguese.lng"

- Open this new file with Notepad (or other text editor of your choice) and translate all words or phrases after the equal (=) character of definition lines.

e.g. For "Search" button: "MainForm.B_Find.caption=Search" à "MainForm.B_Find.caption=Busca" (without example quotes)

- To test the layout: put the "Portuguese.lng" file into the "SuperFinder.lng" folder (located into program directory) then restart Super Finder and select your language from setup.
- When translation has done, send the translated file to freesoftland@hotmail.it. Thanks a lot!

If you think that my work is useful for you, and want to support his future development, consider to [donate](#) (how much do you want) through [PayPal](#).

😊 Thanks! - [FSL - FreeSoftLand](#)

FSL - FreeSoftLand



Home Page

<http://fsl.sytes.net> or <http://freesoftland.sytes.net>



Our New's Blog

<http://fsl-freesoftland.blogspot.com>



E-Mail

freesoftland@hotmail.it or freesoftland@gmail.com (only English or Italian)

Please, include in the Subject field of mail the word:

- **TRANSLATION** if you want to translate someone of my programs
- **FEEDBACK** for feedback on programs
- **BUG** if you want to report bug in programs
- **REQUEST** if you want to request new features
- **OTHER** for others things

Free link the FreeSoftLand Home Page from your site:

- Copy [this image](#) into your site:



- Add this code to your page:

```
<a href="http://fsl.sytes.net"></a>
```

- Thank You!

If you think that my work is useful for you, and want to support his future development, consider to [donate](#) (how much do you want) through [PayPal](#).

 Thanks! - [FSL - FreeSoftLand](#)

Dear friend,

thank you for using this program... If you think that my work is useful for you, and want to support his future development, consider to donate (how much do you want) through [PayPal](#) and become a [Privileged User](#) of FreeSoftLand forum; a user with highest priority for bugs resolution and enhancement request consideration.

To all privileged users I will donate one special and enhanced version of Super Finder as a thanks for their support.



Thanks!



click to donate

End User License

This software is totally free for non-commercial use; if commercial use is needed, please contact us at: freesoftland@hotmail.it

Permission is granted to anyone to use this software for non-commercial use; if permission for commercial use is needed, please contact us at our Email address: freesoftland@hotmail.it

Except where otherwise noted, all of the documentation and software included in this package is copyrighted by FSL-FreeSoftLand.

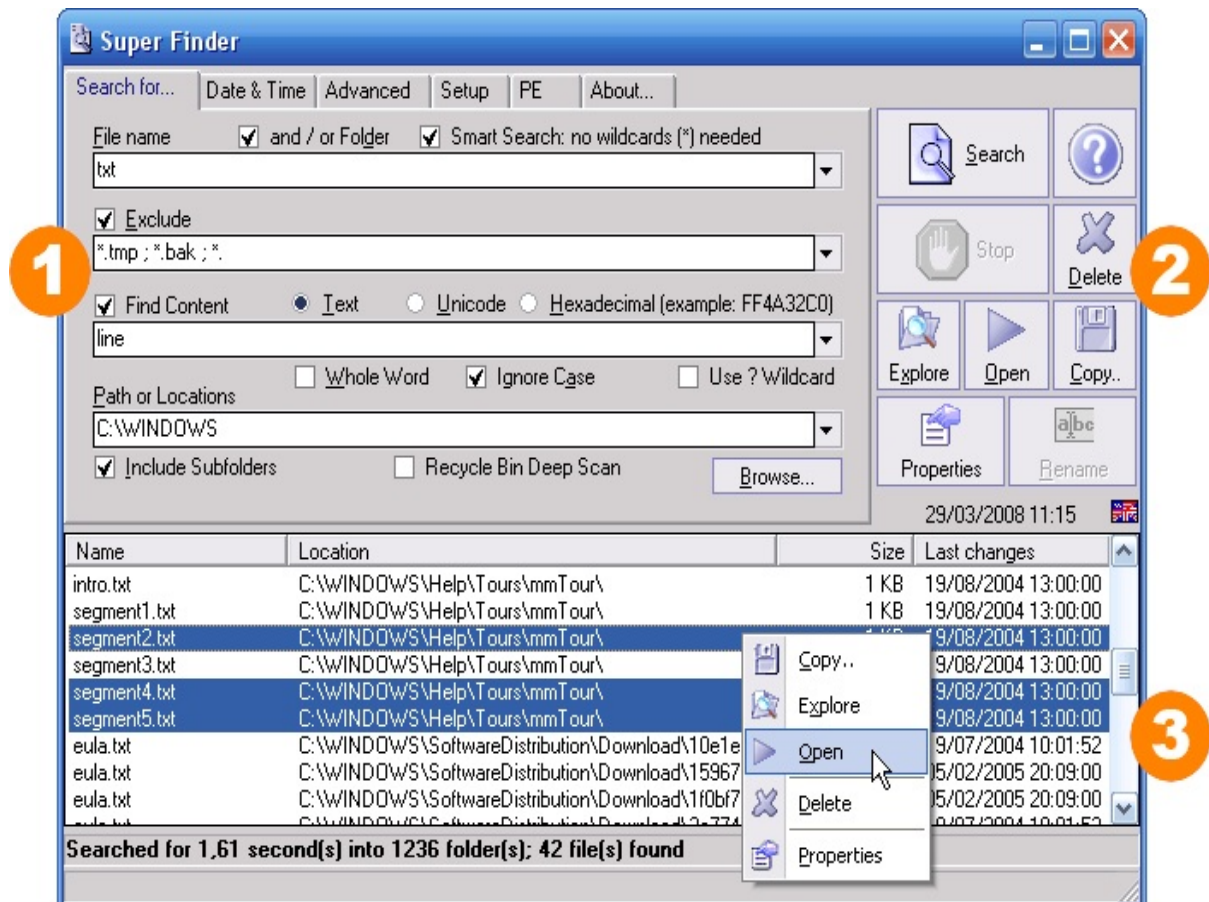
This software is provided "as-is," without any express or implied warranty. In no event shall the author be held liable for any damages arising from the use of this software.

GUI and options:

There are three major areas on the GUI (Graphic User Interface) of Super Finder:

1. Search Parameters area
2. Buttons area
3. Found Files list

Below is the GUI of Super Finder: Please, click on any detail for direct jump to his description.



Note: this screenshot is taken from the Privileged Users version of Super Finder; the standard version may have some small difference.

1 The Search Parameters area:

File Name:

- **File Name edit field:** Specifies the target [filename masks](#) separated by semicolon (;).
- **And / or Folders option:** If checked, subfolders of the target folders specified in "Path or Location" will be included in the search.
- **Smart Search option:** If checked, allow to search for similar names without type any [wild card](#) characters (*, ?) at the begin, end or middle of partial file name or extension to search (see [filename masks](#) for an example).

Exclude:

- **Exclude option:** If checked, enable the [exclude file masks](#).
- **Exclude edit field:** Contains list of files that should be excluded from the search result. [Wild cards](#) (*, ?) can be used for Drive and filename. Remember to uncheck the Exclude option if you do not need this feature.

Find Content:

- **Find Content option:** If checked, enable the search for a phrase (the [Content Field](#)) into all found files.
- **Find Content edit field:** Specifies the phrase that should be located in the content of the file(s). Remember to uncheck the Find Content option if you do not need this feature.
- **Text, Unicode or Hexadecimal option:** Use this option to select the phrase data format.
- **Whole Word option:** If checked, Super Finder searches for whole words

only.

- **Ignore Case option:** If checked, the Super Finder performs a case insensitive search to locate the phrase inside the file.
- **Use ? wildcard option:** If checked, the question mark (?) can be used as wild card for special searches. (Privileged Users version only)
E.g. to search text into WordPerfect™ 5 DOS version, which use different symbols character set: if you search for "ABC-DEF" you must type "ABC?DEF" to found the text you search for.

Path or Locations:

- **Path or Locations edit field:** Determines the target [path masks](#) separated by semicolon (;)
- **Include Subfolders option:** If checked, perform search into subfolders of all specified locations of [path masks](#).
- **Recycle Bin deep scan:** If checked, perform specialized scan into all Recycle Bins of all logical drives. (Privileged Users version only).
- **Browse button:** Open the directory browser, to select the path or location where start to search.

Privileged Users version only:

All four edit fields (File Name, Exclude, Find Content and Path or Locations) have an MRU (Most Recent Used) management. You can select up to last 16 typed entry.

2 The Buttons area:

The button area contains these buttons:

- **Search:** Begin the search.
- **Help:** Show this help file.

- **Stop:** Stop the search and show a partial list of files (if found any).
- **Delete:** Delete selected file or folder.
- **Explore:** Browse folder containing selected file.
- **Open:** Execute associated application for selected file.
- **Copy...:** Copy selected file to specific path or location.
- **Properties:** Show properties of selected file or folder.
- **Rename:** Rename selected file.

Privileged Users version only:

All the buttons related commands (except for Rename) can operate for **more than one file or folder**.

3 The Found Files list:

Features:

- The Found Files list shows the result of the search.
- The list **can be sorted** by Name, Location, Size or Last Changes date and time by clicking on respective column headers.
- From this list, you can **drag and drop** the selected file to Desktop or any folder of your choice.
- Right-click contextual menu is also available for each item of list.

Privileged Users version only:

Is possible to select **more than one item** on the Found Files list; with this feature you can:

- Delete multiple files or folder (suitable e.g. for disk cleaning, by searching and removing temporary files).

- Copy multiple files or folder to specific path.
- Show properties for all selected items.
- Open multiple items with associated programs.
- Explore (open) multiple folders containing selected items.
- Drag and drop (copy) multiple items from various source paths to specific path.

Note: Copy, Explore, Open, Delete and Properties operation are available even through right click contextual menu.

Continue to:

- [Advanced guide](#)
- [Search examples](#)
- [Contacts](#)

If you think that my work is useful for you, and want to support his future development, consider to [donate](#) (how much do you want) through [PayPal](#).

 Thanks! - [FSL - FreeSoftLand](#)

Two DOS expressions can be used into some edit fields that will probably be intuitive to most of you.

The first is the **asterisk** which is a symbol (*) commonly found above the "8" key on the US keyboards. The asterisk widely is known as a "**wild card**". The asterisk represents any group of characters or no characters.

The other DOS expression is the **question mark** (?). It functions in a manner similar to the asterisk. Instead of representing groups of characters, the question mark represents any single character.

If you think that my work is useful for you, and want to support his future development, consider to [donate](#) (how much do you want) through [PayPal](#).



Thanks! - [FSL - FreeSoftLand](#)

The Filename masks specify a list of target filenames separated by semicolon (;).

Some examples:

Mask without smart search	Mask with smart search	Scope
*.txt ; *.doc ; *.wri	txt ; doc ; wri	Search for all text, doc and WordPad files
my*.txt	my.txt	Search for all text files that begin with "my"
.b	.b	Search for files with extension that begin with "b" (e.g. .bas, .bin, etc.)
where.*	where	Search for all files that contain the word "where" into filename
*.da?	.da	Search for files like .dat, .dar, .dac, etc.

If you think that my work is useful for you, and want to support his future development, consider to [donate](#) (how much do you want) through [PayPal](#).

 Thanks! - [FSL - FreeSoftLand](#)

The Exclude file masks contain list of files that should be excluded from the search result, separated by semicolon (;).

Example:

Mask	Scope
*.txt	Ignores all text files in any folder and drive
C:*.txt	Ignores all text files in root of drive C:
?:*.txt	Ignores all text files in root of any drive
C:lib*.txt	Ignores all text files in lib subfolder of any folder of drive C:
lib*.txt	Ignores all text files in lib subfolder of any folder of any drive
C:lib*.txt	Ignores all text files in lib subfolder of root of drive C:
:\lib.txt	Ignores all text files in lib subfolder of root of any drive
*.txt ; *.DOC ; *.WRI	Ignores all text, DOC or WordPad files in any folder and drive

If you think that my work is useful for you, and want to support his future development, consider to [donate](#) (how much do you want) through [PayPal](#).



Thanks! - [FSL - FreeSoftLand](#)

The Content field contains the data to be searched into all found files.

Three modes are supported: Text, Unicode and Hexadecimal:

- Text:** To search plain text into text or document files.
- Unicode:** To search e.g. for a string into resource section of a file.
- Hexadecimal:** To search a pattern into nontext files or special files (e.g. executable or binary files).

Below is the equivalence between Text and Unicode versus Hexadecimal pattern:

Text & Unicode	Hexadecimal pattern
"THIS IS TEXT"	54 48 49 53 20 49 53 20 41 20 54 45 58 54
"THIS IS UNICODE"	00 54 00 48 00 49 00 53 00 20 00 49 00 53 00 20 00 55 00 4E 00 49 00 43 00 4F 00 44 00 45

More info by request trough the support [forum](#).

If you think that my work is useful for you, and want to support his future development, consider to [donate](#) (how much do you want) through [PayPal](#).

 Thanks! - [FSL - FreeSoftLand](#)

The Path masks contain list of path or locations where search from, separated by semicolon (;).

Example:

Mask	Scope
C: ; D: ; E:	Search into current folders of C, D and E drives
C:\ ; D:\ ; E:\	Search into root folders of C, D and E drives
C:\Windows	Search only into C:\Windows directory
C:\Windows ; F:\Temp	Search into C:\Windows and F:\Temp directories
C:\Program Files\FSL	Search into FSL folder in Program Files directory

If you think that my work is useful for you, and want to support his future development, consider to [donate](#) (how much do you want) through [PayPal](#).

 Thanks! - [FSL - FreeSoftLand](#)

Four special tabs:

There are four other tabs on upper side of Search Parameters area of Super Finder:

1. Date & Time
2. Advanced
3. Setup
4. PE

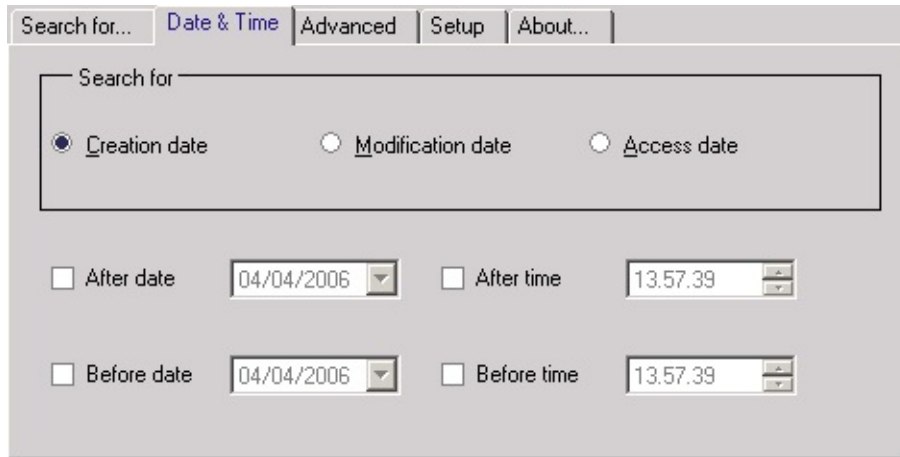
Please, click on tab for direct jump to his description.



Note: this screenshot is taken from the Privileged Users version of Super Finder; the standard version may have some small difference.

1 The Date & Time criteria:

Please, click on any detail for direct jump to his description.



Super Finder can locate files or folders by:

- **Creation date:** The creation date and time (default).
- **Modification date:** The last modification date and time.
- **Access date:** The last access date and time.

After date mode selection, you can specify the date and time range:

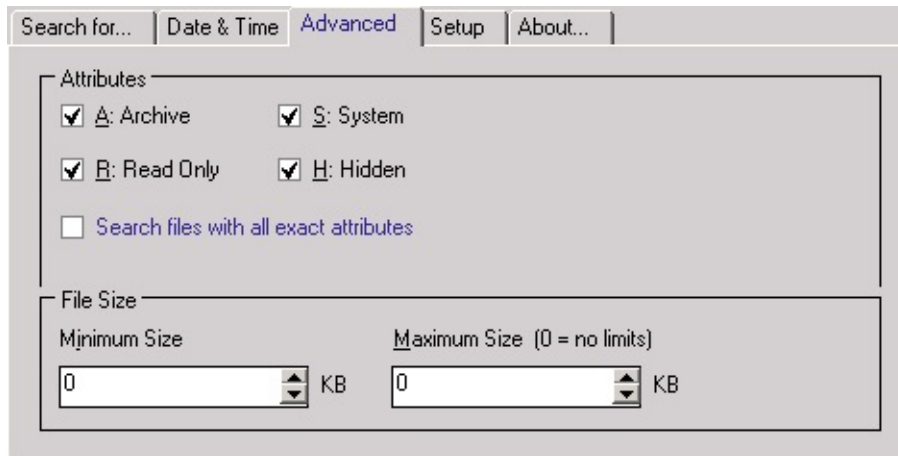
- **After date:** Determines the lower range of the file date; check this option to enable the respective selection field (default: unchecked).
- **After time:** Determines the lower range of the file time; check this option to enable the respective selection field (default: unchecked).
- **Before date:** Determines the upper range of the file date; check this option to enable the respective selection field (default: unchecked).
- **Before time:** Determines the upper range of the file time; check this option to enable the respective selection field (default: unchecked).

Note: One or more of these range option can be selected at same time.

Leave all four options unchecked (default) for no date or time search criteria.

2 The Advanced criteria:

Please, [click on any detail for direct jump to his description.](#)



Super Finder can locate files or folders by File Attributes:

Following options determine the desired attributes for the target files:

- **A: Archive:** Archive files are acceptable (default: checked).
- **R: Read Only:** Read only files are acceptable (default: checked).
- **S: System:** System files are acceptable (default: checked).
- **H: Hidden:** Hidden files are acceptable (default: checked).
- **Search files with all exact attributes:**
If checked, files will be accepted if its attributes are **exactly same as the attributes specified** in *Attributes* group box.
If unchecked (default), the target files should have **one of specified attributes** to be accepted.

Super Finder can locate files or folders by File Size:

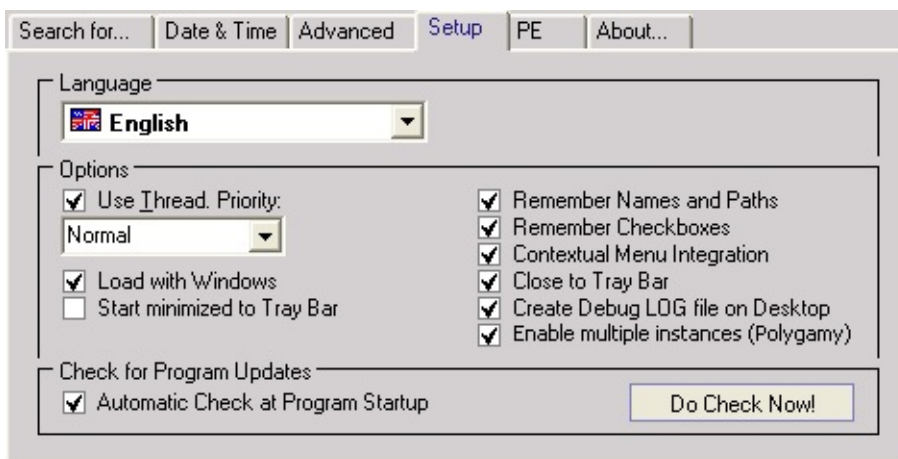
Following options determine the desired size range for the target files:

- **Minimum Size:** Determines the lower range of the file size. Set this property to zero (default) if you do not need this limit.
- **Maximum Size:** Determines the upper range of the file size. Set this property to zero (default) if you do not need this limit.

Note: Leave both size fields to zero (default) for no size range checks while search.

3 Setup:

Please, [click on any detail for direct jump to his description.](#)



Language Option:

- **Language:** Select your language from this pull down menu (default: English).

Note: We need translators! Please, read [here](#) if you want to translate into your languages or dialects.

Special Options:

- **Use Thread:** If checked (default), the program performs search in threaded mode, allowing you to select the CPU time resources (priority) used.
- **Priority:** If Use Thread checked, you can select from (in order): Idle, Lowest, Lower, Normal (default), Higher, Highest and Time Critical. Idle Priority has the lowest consumption of CPU time resources and Time Critical the highest.
- **Load with Windows:** If checked (default), Super Finder start minimized to Tray Bar when Windows start.
- **Start minimized to Tray Bar:** If checked (default), Super Finder start minimized to Tray Bar when executed.
- **Remember Names and Paths:** If checked (default), the program store all four edit fields of the [Search Parameters area](#) (File Name, Exclude, Find Content and Path or Locations) in the registry of Windows and restore them at the program startup instead to setting to the default.
- **Remember Checkboxes:** If checked (default), the program store his settings in the registry of Windows and restore them at the program startup instead to setting to the default.
- **Contextual Menu Integration:** If checked (default), Super Finder can be activated by selecting the "Search... with Super Finder" item available from the right-click contextual menu of drives and folders.
Please note if running on Windows Vista: Super Finder must be "Run As Administrator" in order to enable/disable this option.
- **Close to Tray Bar:** If checked (default), Super Finder will be minimized to Tray Bar instead of to be closed.
- **Create Debug LOG file on Desktop:** If checked, the program create a text file on Desktop with debugging informations.
- **Enable multiple instances (Polygamy):** if checked, multiple instances of Super Finder can be opened.

Check for Program Updates Options:

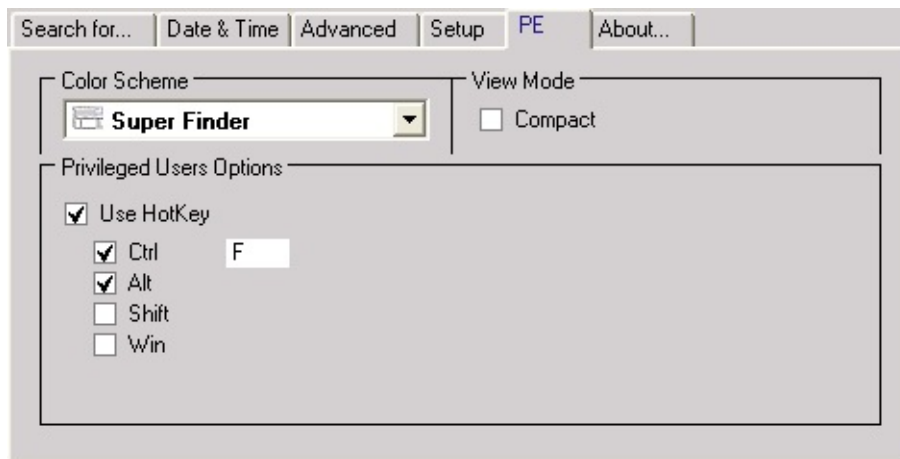
- **Automatic Check at Program startup:** If checked (default), Super Finder perform onetime online check if new program update is available for download at program startup.
- **Do Check Now!:** Perform connection to [FreeSoftLand](#) server and check if new program update is available for download.

Note: If update check does not work, make sure the Windows Firewall have enabled Super Finder in their exceptions list.

The on-line check **does not download any updates**; simply notify if update is available from [FreeSoftLand home page](#).

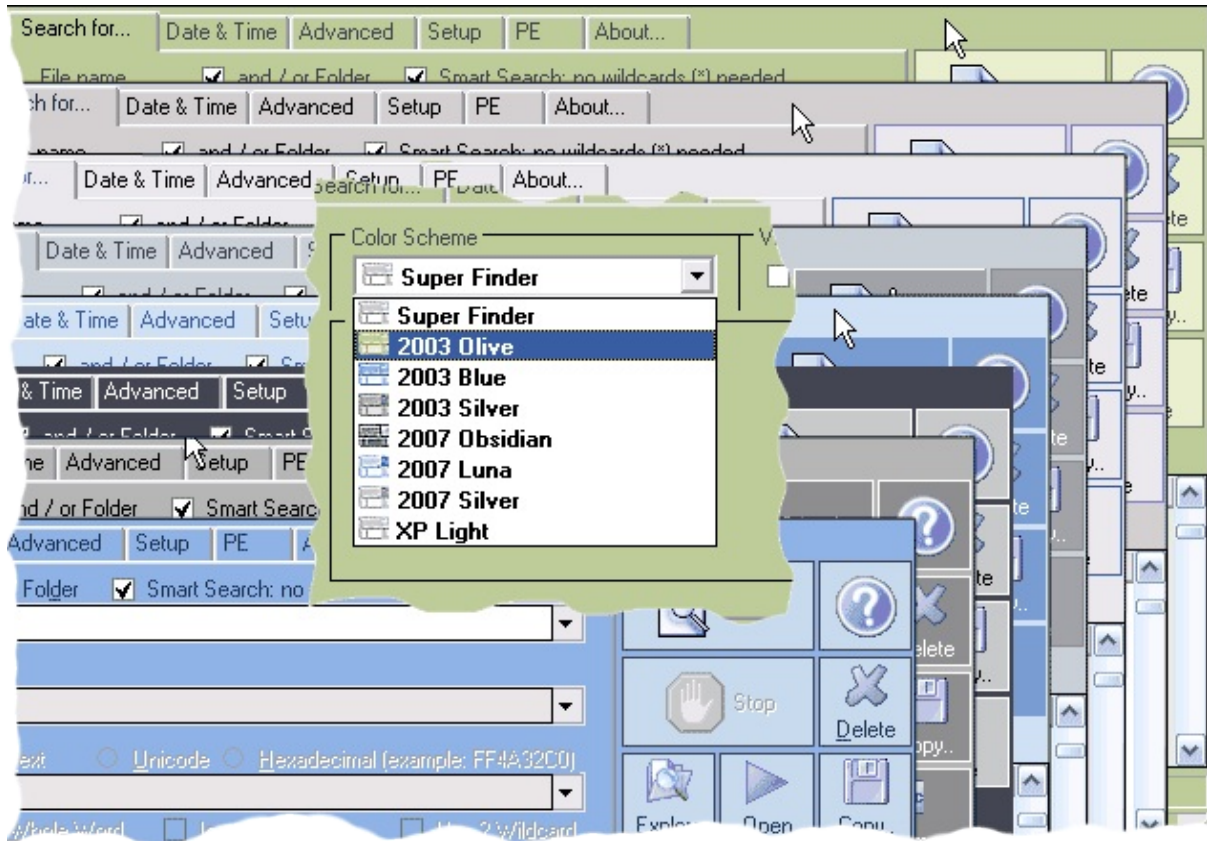
4 PE (Privileged users Edition):

Please, [click on any detail for direct jump to his description](#).



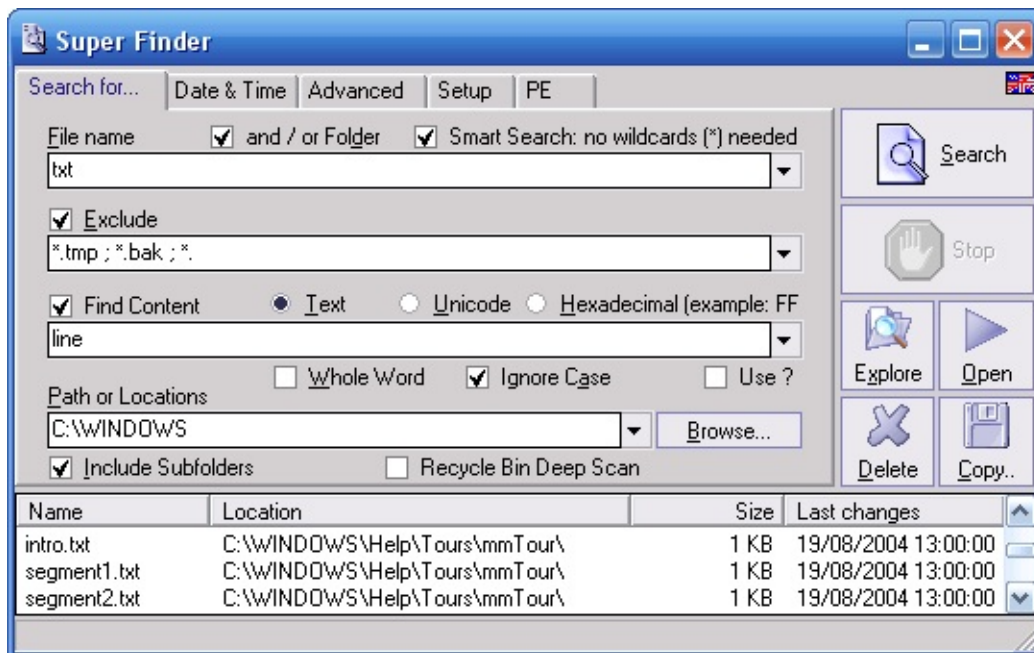
Color Scheme (Privileged Users version only):

- This option to select the color scheme (Skin) of Super Finder:



View Option (Privileged Users version only):

- **Compact:** Switch between Standard and Compact view mode (see image below). All modes are sizeable.



(compact mode layout)

Privileged Users Option:

- **Use HotKey:** If checked (default), Super Finder can be activated by pressing the customizable hotkey (Ctrl-Alt F by default).

Continue to:

- [Search examples](#)
- [Contacts](#)

If you think that my work is useful for you, and want to support his future development, consider to [donate](#) (how much do you want) through [PayPal](#).

😊 Thanks! - [FSL - FreeSoftLand](#)

Below are some search examples:

- [Simple search \(1. Into single drive and all his subdirectories\)](#)
- [Simple search \(2. Into single directory\)](#)
- [Where are my documents?](#)
- [Where are my pictures?](#)
- [Clean disk \(1. Search for unwanted files\)](#)
- [Clean disk \(2. Search for zero size files\)](#)
- [Search for contents](#)

Continue to:

- [FAQ](#)

If you think that my work is useful for you, and want to support his future development, consider to [donate](#) (how much do you want) through [PayPal](#).

 Thanks! - [FSL - FreeSoftLand](#)

Search for single exact name file into single drive and all his subdirectories:

Settings to search (for example) "Test.exe" file into C drive and in all his subdirectories.

<i>Parameter</i>	<i>Type</i>	<i>Value</i>
File Name	editable text field	text.exe
and/or folder	option	
Smart Search	option	Unchecked
Exclude	option	Unchecked
Exclude	editable text field	
Find Content	option	Unchecked
Find Content	editable text field	
Text/Unicode/Hex	option	
Whole Word	option	
Ignore Case	option	
Use ? Wildcard	option	
Path or Location	editable text field	C:\
Include Subfolders	option	Checked
Recycle Bin Deep Scan	option	

If you think that my work is useful for you, and want to support his future development, consider to [donate](#) (how much do you want) through [PayPal](#).

 Thanks! - [FSL - FreeSoftLand](#)

Search for single exact name file into single directory:

Settings to search (for example) "Test.exe" file into "Windows" directory of drive C.

<i>Parameter</i>	<i>Type</i>	<i>Value</i>
File Name	editable text field	text.exe
and/or folder	option	
Smart Search	option	Unchecked
Exclude	option	Unchecked
Exclude	editable text field	
Find Content	option	Unchecked
Find Content	editable text field	
Text/Unicode/Hex	option	
Whole Word	option	
Ignore Case	option	
Use ? Wildcard	option	
Path or Location	editable text field	C:\Windows
Include Subfolders	option	Unchecked
Recycle Bin Deep Scan	option	

If you think that my work is useful for you, and want to support his future development, consider to [donate](#) (how much do you want) through [PayPal](#).

 Thanks! - [FSL - FreeSoftLand](#)

Search for single file like "name" into more drives:

Settings to search (for example) for single file with name like "name" into C, D and F drives using the smart search option.

Possible found files names:

- MyNames.txt
- Test.Name
- NAME.DOC
- Long file **name** for test.bin
- And more...

<i>Parameter</i>	<i>Type</i>	<i>Value</i>
File Name	editable text field	name
and/or folder	option	
Smart Search	option	Checked
Exclude	option	Unchecked
Exclude	editable text field	
Find Content	option	Unchecked
Find Content	editable text field	
Text/Unicode/Hex	option	
Whole Word	option	
Ignore Case	option	
Use ? Wildcard	option	
Path or Location	editable text field	C:\ ; D:\ ; F:\
Include Subfolders	option	Checked
Recycle Bin Deep Scan	option	

If you think that my work is useful for you, and want to support his future development, consider to [donate](#) (how much do you want) through [PayPal](#).

 Thanks! - [FSL - FreeSoftLand](#)

Search for documents (Text, Docs and WordPad):

Settings to search all documents files into C, D and F drives and in all subdirectories of each drive.

Without Smart Search:

<i>Parameter</i>	<i>Type</i>	<i>Value</i>
File Name	editable text field	*.txt ; *.doc ; *.wri
and/or folder	option	
Smart Search	option	Unchecked
Exclude	option	Unchecked
Exclude	editable text field	
Find Content	option	Unchecked
Find Content	editable text field	
Text/Unicode/Hex	option	
Whole Word	option	
Ignore Case	option	
Use ? Wildcard	option	
Path or Location	editable text field	C:\ ; D:\ ; F:\
Include Subfolders	option	Checked
Recycle Bin Deep Scan	option	

With Smart Search:

<i>Parameter</i>	<i>Type</i>	<i>Value</i>
File Name	editable text field	.txt ; .doc ; .wri

and/or folder	option	
Smart Search	option	Checked
Exclude	option	Unchecked
Exclude	editable text field	
Find Content	option	Unchecked
Find Content	editable text field	
Text/Unicode/Hex	option	
Whole Word	option	
Ignore Case	option	
Use ? Wildcard	option	
Path or Location	editable text field	C:\ ; D:\ ; F:\
Include Subfolders	option	Checked
Recycle Bin Deep Scan	option	

If you think that my work is useful for you, and want to support his future development, consider to [donate](#) (how much do you want) through [PayPal](#).

 Thanks! - [FSL - FreeSoftLand](#)

Search for most common types of pictures:

Settings to search all pictures files into C drive only and in all his subdirectories.

Without Smart Search:

<i>Parameter</i>	<i>Type</i>	<i>Value</i>
File Name	editable text field	*.bmp ; *.gif ; *.jpg ; *.jpeg ; *.png ; *.wmf
and/or folder	option	
Smart Search	option	Unchecked
Exclude	option	Unchecked
Exclude	editable text field	
Find Content	option	Unchecked
Find Content	editable text field	
Text/Unicode/Hex	option	
Whole Word	option	
Ignore Case	option	
Use ? Wildcard	option	
Path or Location	editable text field	C:\
Include Subfolders	option	Checked
Recycle Bin Deep Scan	option	

With Smart Search:

<i>Parameter</i>	<i>Type</i>	<i>Value</i>
File Name	editable text field	.bmp ; .gif ; .jpg ; .jpeg ; .png ; .wmf

and/or folder	option	
Smart Search	option	Checked
Exclude	option	Unchecked
Exclude	editable text field	
Find Content	option	Unchecked
Find Content	editable text field	
Text/Unicode/Hex	option	
Whole Word	option	
Ignore Case	option	
Use ? Wildcard	option	
Path or Location	editable text field	C:\
Include Subfolders	option	Checked
Recycle Bin Deep Scan	option	

If you think that my work is useful for you, and want to support his future development, consider to [donate](#) (how much do you want) through [PayPal](#).

 Thanks! - [FSL - FreeSoftLand](#)

Search for unwanted files (Backup files, Help index files, temporary files, etc...):

Settings to search and clean for all unwanted files into C drive only and in all his subdirectories.

Without Smart Search:

<i>Parameter</i>	<i>Type</i>	<i>Value</i>
File Name	editable text field	*.tmp ; *.bak ; *.~* ; ~*.~* ; *.chk ; chklist.* ; *.gid ; *.fts ; *.ftg ; *._mp ; *.syd ; *.wbk ; *.xlk ; *.cdr_ ; *.#res ; *.@@@
and/or folder	option	
Smart Search	option	Unchecked
Exclude	option	Unchecked
Exclude	editable text field	
Find Content	option	Unchecked
Find Content	editable text field	
Text/Unicode/Hex	option	
Whole Word	option	
Ignore Case	option	
Use ? Wildcard	option	
Path or Location	editable text field	C:\
Include Subfolders	option	Checked
Recycle Bin Deep Scan	option	

After the search (important):

1. Select **ONLY** the files you sure are unwanted.
2. If you want, delete these files to clean the disk.

Note: multiple items selection is available only in Privileged Users version of Super Finder.

With Smart Search:

<i>Parameter</i>	<i>Type</i>	<i>Value</i>
File Name	editable text field	.tmp ; .bak ; .~ ; .chk ; chklist. ; .gid ; .fts ; .ftg ; ._mp ; .syd ; .wbk ; .xlk ; .cdr_ ; .#res ; .@@@
and/or folder	option	
Smart Search	option	Checked
Exclude	option	Unchecked
Exclude	editable text field	
Find Content	option	Unchecked
Find Content	editable text field	
Text/Unicode/Hex	option	
Whole Word	option	
Ignore Case	option	
Use ? Wildcard	option	
Path or Location	editable text field	C:\
Include Subfolders	option	Checked
Recycle Bin Deep Scan	option	

After the search (important):

1. Select **ONLY** the files you sure are unwanted.

2. If you want, delete this files to clean the disk.

Note: multiple items selection are available only in Privileged Users version of Super Finder.

If you think that my work is useful for you, and want to support his future development, consider to [donate](#) (how much do you want) through [PayPal](#).

 Thanks! - [FSL - FreeSoftLand](#)

Search for files that have length zero:

Settings to search and clean for all files or folders that have zero bytes length into C drive only and in all his subdirectories.

Without Smart Search:

<i>Parameter</i>	<i>Type</i>	<i>Value</i>
File Name	editable text field	*.*
and/or folder	option	Unchecked
Smart Search	option	Unchecked
Exclude	option	Unchecked
Exclude	editable text field	
Find Content	option	Unchecked
Find Content	editable text field	
Text/Unicode/Hex	option	
Whole Word	option	
Ignore Case	option	
Use ? Wildcard	option	
Path or Location	editable text field	C:\
Include Subfolders	option	Checked
Recycle Bin Deep Scan	option	
<u>Maximum Size</u>	editable numeric field	1

After the search (important):

1. Click on "Size" header of Found Files List, to see the zero length files on top.

2. Select **ONLY** the files that have the "**0 Kb**" text in the size column cell of Found Files list.
3. If you want, delete these files to clean the disk.

Note: multiple items selection is available only in Privileged Users version of Super Finder.

With Smart Search:

<i>Parameter</i>	<i>Type</i>	<i>Value</i>
File Name	editable text field	*
and/or folder	option	Unchecked
Smart Search	option	Checked
Exclude	option	Unchecked
Exclude	editable text field	
Find Content	option	Unchecked
Find Content	editable text field	
Text/Unicode/Hex	option	
Whole Word	option	
Ignore Case	option	
Use ? Wildcard	option	
Path or Location	editable text field	C:\
Include Subfolders	option	Checked
Recycle Bin Deep Scan	option	
<u>Maximum Size</u>	editable numeric field	1

After the search (important):

1. Click on "Size" header of Found Files List, to see the zero length files on top.
2. Select **ONLY** the files that have the "**0 Kb**" text in the size column cell of Found Files list.
3. If you want, delete this files to clean the disk.

Note: multiple items selection are available only in Privileged Users version of Super Finder.

If you think that my work is useful for you, and want to support his future development, consider to [donate](#) (how much do you want) through [PayPal](#).



Thanks! - [FSL - FreeSoftLand](#)

Search for all files which content is "hello" or "Hello" or "HELLO" into single drive:

Settings to search all files that contain the "hello" plain text into C drives and in all his subdirectories.

Without Smart Search:

<i>Parameter</i>	<i>Type</i>	<i>Value</i>
File Name	editable text field	*.*
and/or folder	option	
Smart Search	option	Unchecked
Exclude	option	Unchecked
Exclude	editable text field	
Find Content	option	Checked
Find Content	editable text field	hello
Text/Unicode/Hex	option	Text option selected
Whole Word	option	Unchecked
Ignore Case	option	Checked
Use ? Wildcard	option	
Path or Location	editable text field	C:\
Include Subfolders	option	Checked
Recycle Bin Deep Scan	option	

With Smart Search:

<i>Parameter</i>	<i>Type</i>	<i>Value</i>

File Name	editable text field	*
and/or folder	option	
Smart Search	option	Checked
Exclude	option	Unchecked
Exclude	editable text field	
Find Content	option	Checked
Find Content	editable text field	hello
Text/Unicode/Hex	option	Text option selected
Whole Word	option	Unchecked
Ignore Case	option	Checked
Use ? Wildcard	option	
Path or Location	editable text field	C:\
Include Subfolders	option	Checked
Recycle Bin Deep Scan	option	

If you think that my work is useful for you, and want to support his future development, consider to [donate](#) (how much do you want) through [PayPal](#).

 Thanks! - [FSL - FreeSoftLand](#)

Frequently Asked Questions (FAQ):

Below are some FAQ we have collected from question e-mails we have received.

Note: is a work in progress list...; if you have some questions not listed below, please [contact us](#).

Q: Your work is useful for me... How I can donate some money to support your development?

A: Many thanks for your intentions! Please go [here](#).

Q: Where I can get the Privileged User edition of your program?

A: You must be a Privileged user in order to get the Privileged Users edition.

Q: How I can become Privileged User?

A: Please read [here](#).

Q: I want to use your program for commercial use. I need more information.

A: Please [contact us](#) for more information about commercial use.

Continue to:

- [Contacts](#)

If you think that my work is useful for you, and want to support his future development, consider to [donate](#) (how much do you want) through [PayPal](#).

 Thanks! - [FSL - FreeSoftLand](#)