

## Fast Analog CardBus Video Capture Card

---

Professional, fast, state of the art NTSC, PAL, SECAM Video Capture Card for your laptop. Enables you to capture and store video clips and images from any standard video source in full motion (30 frames per second).

*VCE-PRO* is a low cost, full frame, high performance, plug and play CardBus video capture card allowing you to display, capture, store, and preview full motion video on your notebook computer.

*VCE-PRO* includes a PCMCIA Video Capture Card, the *VCE-PRO Application* (a video viewing, configuration, and capturing program), video cables, and software drivers for *Windows 2000* and *Windows XP* operating systems. The card and cable support two composite and one S-Video input connectors with anti-alias filters and one external trigger jack.

The *VCE-PRO Application* allows you to:

- capture single frame, multiple frames, and standard AVI clips from a variety of NTSC, PAL or SECAM sources
- use an external trigger to record in demanding machine vision environments
- stamp frames with a message along with the date and time of capture
- view, scroll or step through recorded images
- set and change image and capturing options

The *VCE-PRO Application* starts with a [VCE-PRO Application window](#) and a [Control Panel](#).

---

Microsoft, Windows, and Windows XP are either trademarks or registered trademarks of the Microsoft Corporation in the United States and/or other countries. Other product names mentioned herein may be the trademarks of their respective owners.



## Features

### **Key features include:**

- PC card cardbus 8.0
  - Plug-and-play
  - Hot insertion and removal
  - Automatic recognition for NTSC, PAL, and SECAM signals
  - 2 Composite, one S-Video inputs with anti-alias filters and one external trigger input
  - Fast video capture (30 frames per second) with selectable window sizes
  - Adjustable image brightness, contrast, saturation and hue
  - Captures single frames, multiple frames and standard AVI clips
  - Adjustable frame rates
  - BMP and adjustable compression JPEG file formats
  - Date and Time stamp options
  - Text overlay options
  - Image viewer with play, stop, pause, fast forward, reverse, step up, and step back options.
  - Windows Mediaplayer compatible AVI files.
-

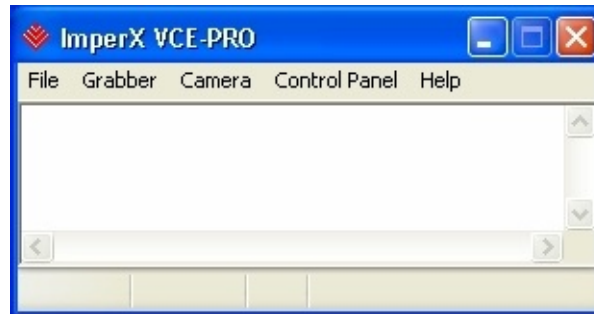


## VCE-PRO Application Window

The *VCE-PRO Application* window is a separate window that opens automatically when the program starts. This window provides the primary area for viewing real-time images received from the camera.

When image viewing is active, the size of this window is automatically scaled to match the incoming video signal ( i.e. NTSC or PAL ) and the *Zoom* setting. The *VCE-PRO Application* window can be sized and moved to suit your needs.

Click on the menu items below for more information.



The *VCE-PRO Application* window also has a status bar on the bottom of the window. The status bar displays [= 4\) BSPSPopupOnMouseOver\(event\)" class="BSSCPopup">Camera Status](#) and [= 4\) BSPSPopupOnMouseOver\(event\)" CLASS="BSSCPopup">DMA Status](#). The [Control Panel](#) window is overlaid on top of the *VCE-PRO Application* window.

---





## File Menu

The *VCE-PRO Application* window provides 2 choices on the *File* menu. Click on the menu for more information.







## Grabber Menu

The *VCE-PRO Application* window provides up to 3 choices on the *Grabber* menu. Click on the menu for more information.



= 4) BSPSPopupOnMouseOver(event)" CLASS="BSSCPopup">



## Camera Menu

The *VCE-PRO Application* window provides 5 choices on the *Camera* menu. Click on the menu for more information.



---

= 4) BSPSPopupOnMouseOver(event)" CLASS="BSSCPopup">



## Control Panel Menu

The *VCE-PRO Application* window provides up to 2 choices on the Control Panel menu. Click on the menu items for more information.



---

= 4) BSPSPopupOnMouseOver(event)" CLASS="BSSCPopup">  
= 4) BSPSPopupOnMouseOver(event)" class="BSSCPopup"> = 4)  
BSPSPopupOnMouseOver(event)" class="BSSCPopup">



## Help Menu

The *VCE-PRO Application* window provides 2 choices on the **Help** menu. Click on the choices for more information.



= 4) BSPSPopupOnMouseOver(event)" CLASS="BSSCPopup">

## DMA Status

Displays the real-time status of the DMA process as **Active** or **Inactive**.

**Active** indicates that you have commanded the *VCE-PRO* to acquire video data by clicking on the *Start Grab* button and that the camera is providing valid framing.

**Inactive** indicates that you have commanded the *VCE-PRO* to stop acquiring video data by clicking on the *Stop Grab* button or that grabbing is enabled but the camera is not providing valid framing.

---

.



## Camera Status

Displays the real-time status of the camera as **Online** or **Offline**.

**Online** indicates that the camera is powered on, attached and providing a signal.

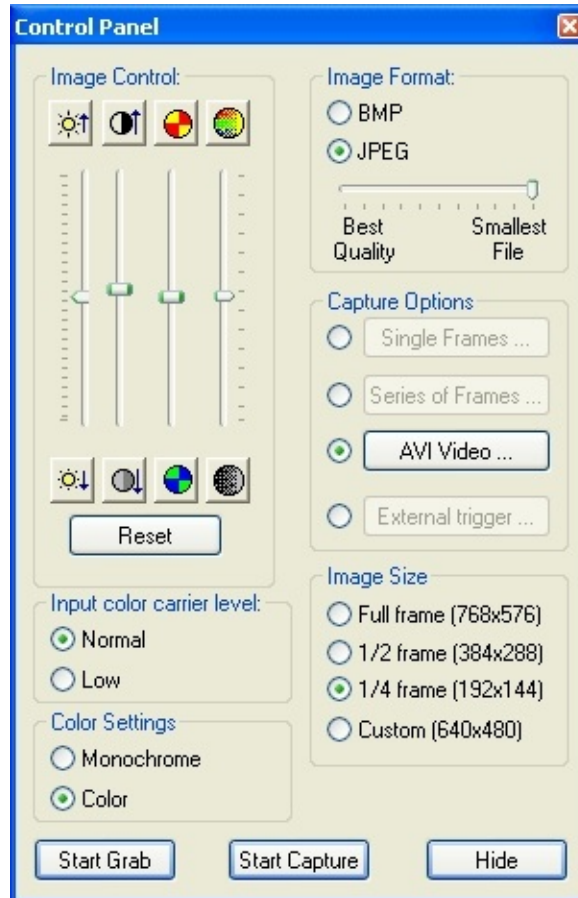
**Offline** indicates that the *VCE-PRO* card is not receiving a signal from the camera because the camera is powered off or the cable is disconnected.

---



## Control Panel

The Control Panel gives you complete control over the images and movies you view and record. Click on the controls below for more information.



---

= 4) BSPSPopupOnMouseOver(event)" CLASS="BSSCPopup">

= 4) BSPSPopupOnMouseOver(event)" CLASS="BSSCPopup">

= 4) BSPSPopupOnMouseOver(event)" CLASS="BSSCPopup">

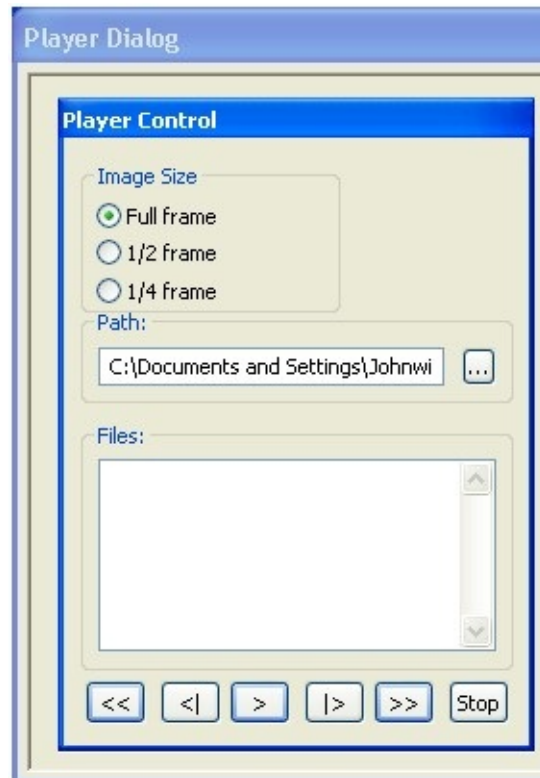
= 4) BSPSPopupOnMouseOver(event)" CLASS="BSSCPopup">





## Player Dialog

The **Player Dialog** window is a separate window that opens automatically when you click **Player** on the **File** menu. This window displays the images you play using the **Player Control** window. You can move the **Player Control** and **Player Dialog** windows to suit your needs. Click on the controls for more information.



---

= 4) BSPSPopupOnMouseOver(event)" CLASS="BSSCPopup">  
= 4) BSPSPopupOnMouseOver(event)" CLASS="BSSCPopup">  
= 4) BSPSPopupOnMouseOver(event)" CLASS="BSSCPopup">



## Specifications

### Video Source:

- Composite or S-Video
- Square pixel and CCIR601 resolution for:

NTSC

PAL (B, D, G, H, I, M, N)

SECAM

- Auto NTSC/PAL format detection
- Automatic gain control
- 16 bit YCrCb (R:2) digital output

### Physical Dimensions:

- PCMCIA Type II: 85mm(4.55in) x 54mm(2.1in) x 5mm(.2in)
- Weight: 35 grams (1.25 oz)

### Electrical Characteristics:

- Operating voltage: 3.3V +/- 5%
- Operating current: 160mA
- Inrush current: 350mA

### Operating Environment:

- Operating temperature: 0°C to 65°C
- Relative humidity: 90% noncondensing







## System Requirements

### Hardware:

- PCMCIA slot that is Cardbus compliant
- An up-to-date [= 4\) BSPSPopupOnMouseOver\(event\)" class="BSSCPopup">Cardbus-to-PCI chipset](#) (Cardbus Controller)
- 800x600 screen resolution (minimum)
- 24 bit color depth (minimum)
- 300 Mhz Pentium class processor (minimum)
- 256 Mb system memory (minimum)

### Operating System:

- Windows 2000
  - Windows XP Home
  - Windows XP Professional
-



## Technical Support

For questions, comments, suggestions, and help you can:

**Email:** [techsupport@imperx.com](mailto:techsupport@imperx.com)

- or -

**Call:** (+1) 561-989-0006 or **Toll Free** (866) 849-1662

- or -

**Fax:** (+1) 561-989-0045

- or -

**Visit our Web Site:** [www.imperx.com](http://www.imperx.com)

**ImperX**  **Incorporated**

6421 Congress Avenue, Suite 204  
Boca Raton, Florida, 33487, USA

---



## Accessories



### **Right angle RCA male/female adapter**

**Model:** RCAC-01

**Description:** A 90 degree RCA adapter with both male and female ends.

**Software Development Kit** is a DLL based software development platform supporting C++ and Visual Basic. Includes easy to follow examples for fast custom application development.

---