


How to use this manual

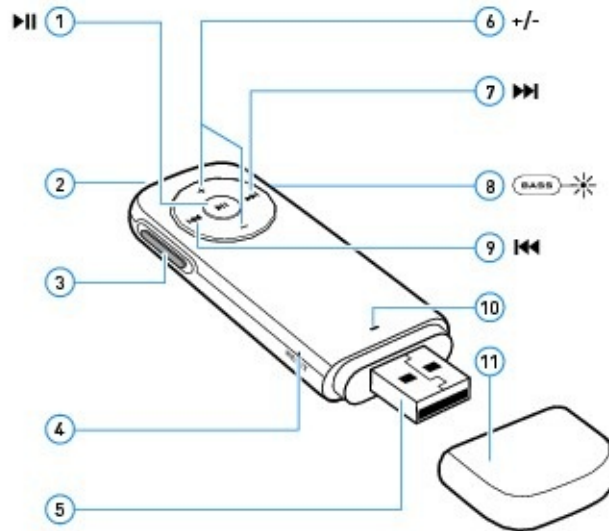
This document has been designed to provide you with complete product knowledge. You can resize the document window, print this document, access linked web sites and get information from specially prepared graphics.

- To jump to a linked topic or a web site, click the underlined blue text, or the hand symbol  whenever it appears.
- To show a short description (tooltip) of an object, move your mouse cursor over it. A tooltip appears after a few seconds.

You can choose to print portions of this document:

1. On the Contents tabbed page to your left, click a topic heading.
- On the menu, click the Print button.
 - In the dialog box that appears, click the option to print one topic only, or all topics under a heading.

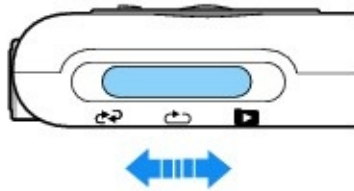
A Tour of Your Player






Button/Connector		What It Does
1.	Power/Play/Pause	Turns player on or off. Press and hold until LED lights up or turns off. Playback starts automatically when your player is turned on.
2.	Headphone jack	Connect your player's earphones to this jack.
3.	Mode switch	See Mode Switch .
4.	Reset Hole	To reset player, insert a straightened paperclip.
5.	USB connector	To charge your player or transfer files, connect this end to your computer's USB port.
6.	Volume Control	Press to increase or decrease the volume.
7.	Next/Fast-Forward	Press to move to the next track. Press and hold to move forward within a track.
8.	Bass Boost	See Enhancing Audio with Bass Boost .
9.	Previous/Rewind	Press to move to the previous track. Press and hold to move backward within a track.
10.	LED	See LED .
11.	Cover	Use this to protect the USB connector when it is not in use.

Mode Switch

Use the Mode Switch to change your player's play modes. In addition to shuffling music, you can also locate your favorite music tracks by skipping folders.






Play Mode	What It Does	
	Shuffle	Plays and repeats all music, in random order.
	Repeat All	Plays and repeats all music folders, in alphanumeric order. If your music is not organized into folders, all tracks are played back in alphanumeric order.
	Skip Folder	Skips to the next folder, in alphanumeric order. To select, push and release.

Note

- To understand your player's playback sequence, see [Playback Order](#).

LED

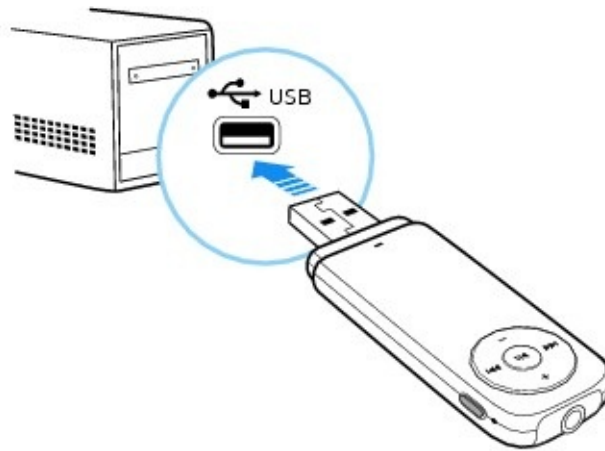
The LED changes color or blinks, to indicate your player's battery and playback status.

	LED	Meaning/Action
Green	Blinking	Connected to computer File transfer in progress. Do not disconnect. Disconnected from computer Playback in progress, good battery level.
	Random blinking	Turning on your player after transferring files Player scanning new files. This may take up to a few minutes.
	Steady	Playback paused. Player turns off after a few minutes. Good battery level.
Red	Blinking	Low battery level, charge as soon as possible.
	Steady	Playback paused. Player turns off after a few minutes. Low battery level, charge as soon as possible.
	3 blinks	After turning on your player Battery depleted, charge immediately. OR No music files detected. During playback Unsupported format detected, file will be skipped. Adjusting volume Maximum volume level reached.
Orange	1 blink	 below 50%
	2 blinks	 50 ~ 74%
	3 blinks	 75 ~ 99%
	Steady	Fully charged.

Charging Your Player

Connect your player to your computer as shown below. When your player starts charging, the LED blinks orange. When charging is complete in approximately two to three hours, the LED changes to steady orange.

Important: Make sure your computer is turned on, and not in power saving mode while the player is charging. *See your operating system's documentation on turning off power saving mode.*



Note

- Avoid using a USB hub.

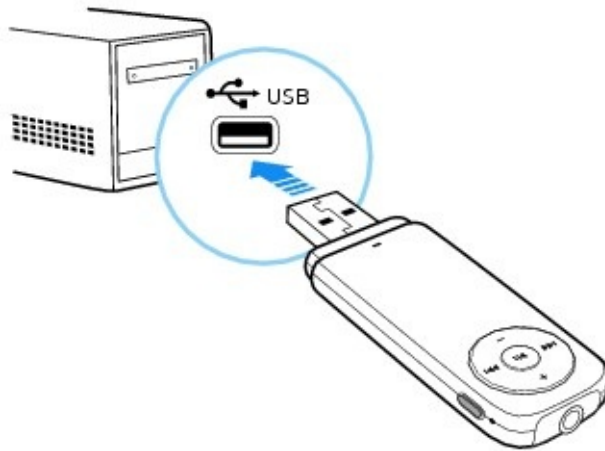
Transferring Audio and Data

Your player is recognized as a removable disk on your computer. So you can use Windows Explorer to transfer audio tracks and data files to your player.

You can also use software such as Windows Media® Player (WMP) to rip CDs and transfer content. WMP supports the transfer of Windows Media Digital Rights Management (WMDRM) 9 or copy-protected music. Other software may not.

To transfer audio tracks and data files from your computer

1. Connect your player to your computer as shown.



- To transfer audio tracks, use [WMP](#) or Windows Explorer. To transfer data files, use Windows Explorer. For details, refer to the application's documentation.

Warning!

- **Do not** disconnect your player when transferring files to or from your player. The [LED](#) blinks green during file transfer. After transferring files, [disconnect your player safely](#).

Note

- Your player plays back audio tracks in MP3, WMA and Audible formats.
- You can also acquire audio tracks from online music stores.

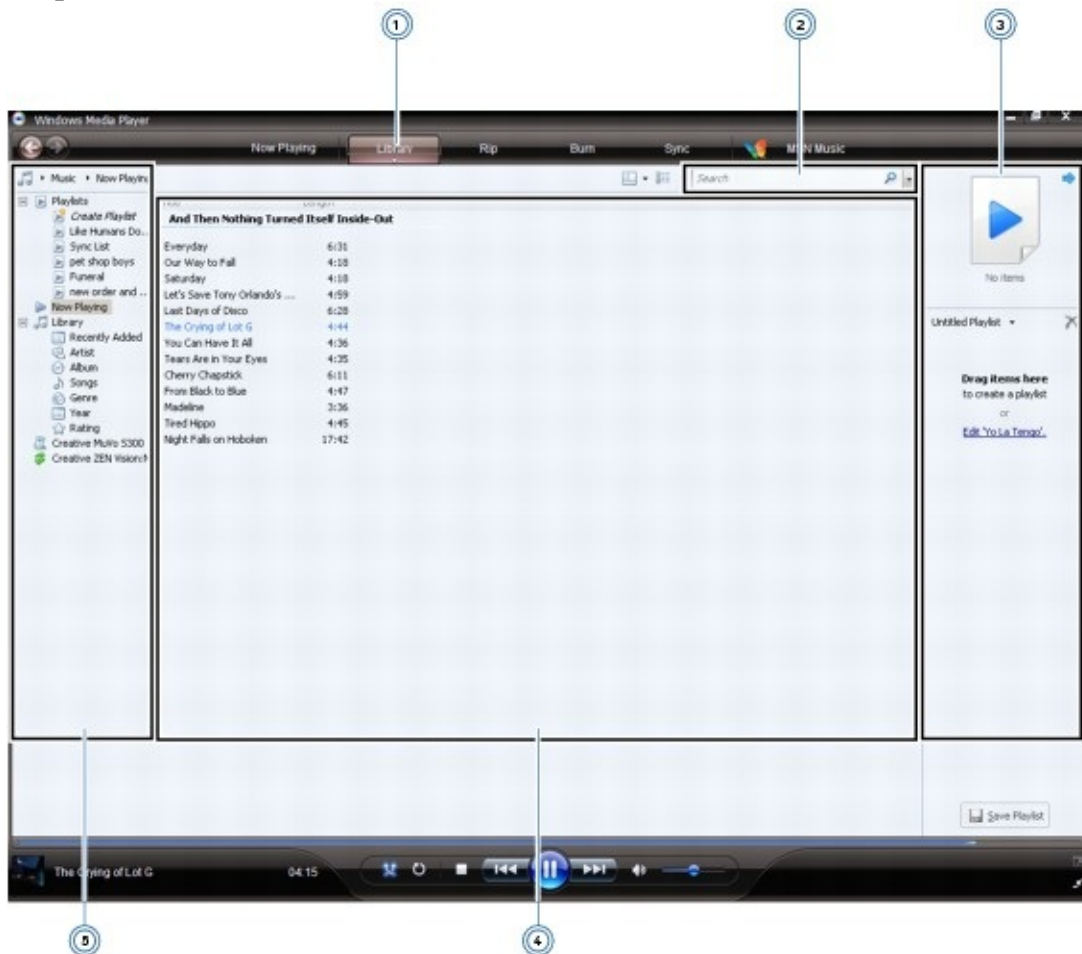
Using Windows Media Player

You can use Windows Media[®] Player (WMP) to manage your media files. Basic instructions on using the latest version of WMP are included in this chapter. For more information on WMP, refer to the WMP online Help.

- [Managing Your Library](#)
- [Transferring Audio Tracks to Your Player](#)

Managing Your Library

Media content is organized in WMP's library. To browse through WMP's library, click the **Library** tab, and select the **Music**, **Pictures**, **Video**, **Recorded TV** or **Other** option.



	Display Element
1.	Library tab
2.	Search box
3.	List pane
4.	Details pane
5.	Contents pane

Before burning CDs or transferring tracks, you need to add media content to your library.

To add items to your library

1. Click the **Library** tab and select the **Add to Library...** option.
- Select one of the options available and click the **OK** button.
- WMP searches for items and automatically adds them to your library.

To sort the items in your library

1. In the **Contents** pane, click the folder containing the items that you want to sort.
- To sort items in ascending alphabetic order, in the **Details** pane, click the heading of the column (for example, **Title**, **Genre** or **Length**) that you want the items sorted by.
 - To sort the items in descending order, in the **Details** pane, click the heading of the column again.

Notes

- The items in your library are played back in the order that they are displayed.

To find an item in your library

Click the **Search** box and type a keyword.

The search results are displayed in the **Details** pane.

To delete items from your library

1. In the **Details** pane, right-click the file to delete.
- Click **Delete**.
 - In the **Windows Media Player** dialog box, click the **Delete from library only** option.
 - Click the **OK** button.

Notes

- In step 3, selecting **Delete from library and my computer** will delete the item the library and your computer's hard disk.

Transferring Audio Tracks to Your Player

You can transfer audio tracks from WMP to your player.

1. Click the **Sync** tab and select your player's entry. Your player appears in the **List** pane.
 - From the **Contents** pane, browse through your library using the various headings such as **Artist**, **Album** or **Genre**.
 - From the **Details** pane, use the drag-and-drop method to transfer the tracks or albums that you want to the **List** pane.
 - Click the **Start Sync** button.

Disconnecting Your Player Safely

To stop your player properly, click the **Safely Remove Hardware**  icon on the Taskbar and then select **Safely remove USB Mass Storage Device**.

Playing Music


Your player automatically starts playing music when it is turned on.

To navigate your player's controls, see [A Tour of Your Player](#).

To change play mode or skip folders, see [Mode Switch](#).

To organize music and customize playback order, see [Playback Order](#).

Enhancing Audio with Bass Boost

You can enhance your audio tracks by boosting its bass. To do so, press the **Bass Boost**  button repeatedly to switch between the following Bass Boost settings:

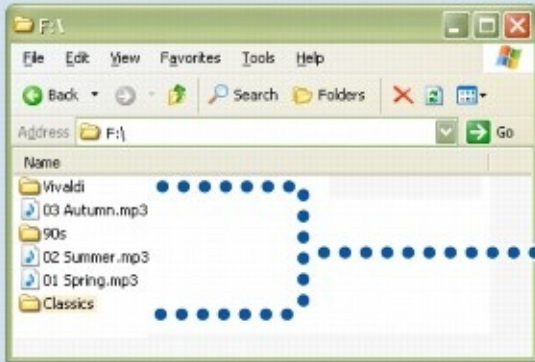
Setting	Description
Level 1	Provides a relatively high bass level. The indicator beside the Bass Boost button is lit dimly.
Level 2	Provides a relatively higher bass level. The indicator beside the Bass Boost button is lit brightly.
Off	Bass Boost is turned off. The indicator beside the Bass Boost button is not lit.

Playback Order

You can customize your music playback experience by naming and organizing your music according to the following guidelines:

- Your player plays back music in alphanumeric order.
For example, **Autumn.mp3**, **02 Summer.mp3** and **01 Spring.mp3** will be played back in the following order:
01 Spring.mp3, **02 Summer.mp3**, **Autumn.mp3**.
- If there are tracks and folders in the same location, tracks will be played back first.
- Your player supports up to three levels of folders from the root. For details, see [Folder Structure](#).

File Organization

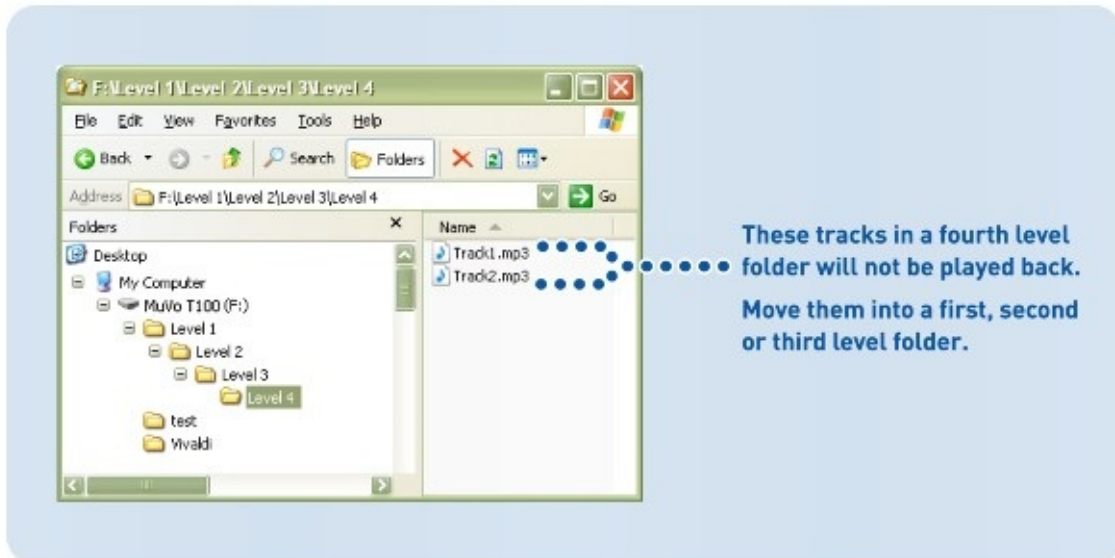


Music playback order when Repeat All or Skip Folder is selected.



Folder Structure

Your player supports up to three levels of folders from the root. Any tracks placed outside this structure, for example in a fourth level folder from the root, will not be played back.



Note

- You can add or delete files and folders in your player using Windows Explorer.

Frequently Asked Questions

This section covers questions you might have while using your player.

Battery

How will I know when my player is fully charged?

When your player's LED changes from blinking orange to steady orange, your player is fully charged.

I have to charge my player's battery quite often. Is there anything I can do to make it last longer?

The following will make your player's battery last longer.

- Avoid unnecessarily moving to the previous or next track.
- Avoid unnecessarily moving forward or backward within tracks.
- Avoid unnecessarily turning the player on or off.
- Avoid using passive speakers or high-powered headphones.
- Avoid playing back tracks with high bitrates or heavy bass.

Transferring Music

How do I transfer music from my audio CDs to my computer or player?

You can use Windows Media Player 9 (or later) to rip music from your CDs. For details, refer to the application's Help file.

What is DRM and what type of DRM music can I transfer to my player?

DRM stands for Digital Rights Management. It is a form of copy protection for music and subscription content purchased from online music stores. Your player is a mass storage class (MSC) device that supports purchased music in the Windows Media DRM (WMDRM) 9 format. Your player does not support subscription music.

To transfer WMDRM 9 music to your player, use Windows Media Player 9 (or later).

Why do error messages appear when I transfer copy protected music to my player?

Your player supports Windows Media DRM (WMDRM) 9 content. Music files that use other forms of copy protection cannot be transferred to or be played on your player. Some content from online music stores may not be transferable to portable devices, or there may be a limit on the number of transfers. For details, contact your online music store.

Why are some files corrupted when they are transferred to my player?

The file transfer process may have been interrupted. To safely disconnect your player after transferring files, click the **Safely Remove Hardware** icon on the Taskbar.

I already have music on my computer that I play with a media player such as Windows Media Player, RealPlayer® or Winamp™. Where is my music normally located on my computer, and how can I transfer it to my Creative player?

Most media players save your music at the following locations:

For Windows Vista™: C:\Users\<<Your Name>\Music.

For Windows® XP: C:\Documents and Settings\<<Your Name>\My Documents\My Music.

To transfer music to your player, you can use Windows Media Player 9 (or later),

which supports the transfer of Windows Media DRM (WMDRM) 9 copy-protected music. Other software may not.

Playing Music

Can I play back MP3 or WMA files in my player if they are stored in folders?

Yes, you can. Your player supports up to three folder levels from the root. Your player supports up to:

- 100 folders for 2 GB players
- 200 folders for 4 GB players

For details about folders, see [Folder Structure](#).

How can I change my player's music playback order?

Your player's playback sequence follows the alphanumeric order of the file names. To customize playback sequence, add a number in front of the file name (for example, 01 Track A, 02 Track B, and so on).

Why does my player skip certain tracks?

The track may have been transferred incorrectly or is in an unsupported format. Check the following:

- The track is in a format supported by your player (.mp3 or .wma).
- The track is within three levels of folders from the root. For details, see [Folder Structure](#).
- If the music track is copy protected, make sure that it is transferred using Windows Media Player 9 (or later), not Windows Explorer.

Supported Formats

Can I play back PlaysForSure™ and subscription content on my player?

Your player is a mass storage class (MSC) device and supports Windows Media DRM (WMDRM) 9 content only. It does not support PlaysForSure and subscription content.




Audible

What is Audible content and is it supported by my player?

Audible content refers to spoken audio programs such as audio books that you can purchase online. To transfer Audible content to your player, download AudibleManager at www.audible.com/creative.

Some Audible tracks contain sections or chapters that you can skip to quickly.

To skip sections within an Audible track

1. Using your player's [Mode Switch](#), push and hold at **Skip Folder** .
Release the mode switch when the LED starts blinking faster.
- Press the **Previous/Rewind**  or **Next/Fast-Forward**  button.
- If no button is pressed for 15 seconds, your player returns to normal play mode.

Transferring Data

Can I use my player as a portable data storage device?

Yes, you can. Your player is recognized as a removable disk by your computer. You can use Windows Explorer to transfer files (including music tracks) to your player. Please note that copy protected WMA files will not play on your player if they were transferred using Windows Explorer.

Your player is displayed as **MuVo T100** in Windows Explorer.

In Windows Vista, click the **Start** button → **Computer**.

In Windows XP, click **Start** → **My Computer**.

Firmware

What is firmware and can my player's firmware be updated?

Firmware refers to the software residing on your player which controls your player's features. Sometimes, improvements are made to your player's firmware and these firmware upgrades are placed on the Creative web site, www.creative.com/support.

Before upgrading your player's firmware, you need to log on to your computer in Administrator mode. For details about Administrator mode, see your operating system's documentation.

LED

After my player is turned on, why does it blink red three times then turn off?

The battery may be too depleted to power your player.

Charge the player for approximately two to three hours by connecting to an actively running computer before turning on the player again. Avoid using a USB hub.

If you encounter problems after two to three hours, try the following:

- Do not use a USB hub and ensure that the player is connected properly.
- Connect your player to another computer.
- Reset your player.

To understand what the LED colors and blinks mean, see [LED](#).

Software

Can I use Windows Media Player to transfer music to my player?

Yes, you can. For details, refer to the application's documentation.

Can I use Creative MediaSource to manage the content on my player?

Yes, you can. If you already own a Creative player that comes with the Creative MediaSource software, you can use the application to manage content that is not copy protected. Your player is displayed as **MuVo T100** under **My Computer** in Creative MediaSource by default.

Troubleshooting

My player is not responding, what do I do?

If your player stops responding, reset the player. This should not cause you to lose any data or audio tracks, unless you were in the middle of transferring files.



1. Insert and remove a straightened paperclip from the Reset Hole.
- If this does not work, proceed to **Formatting Your Player**.

Formatting Your Player

WARNING: This step deletes all your player's content. If possible, back up all your player's content on your computer before proceeding.

1. Make sure your player is connected to your computer and you are logged on in Administrator mode. For details about Administrator mode, see your operating system's documentation.
- In Windows Explorer, right-click your player and select **Format**.
 - If this does not work, proceed to **Reloading Your Player's Firmware in Recovery Mode**.

Reloading Your Player's Firmware in Recovery Mode

1. Download the latest [firmware](#) before proceeding.
- Disconnect your player from the computer, and then turn off your player.
 - Press and hold the **Bass Boost**  button. Continue to hold the button until you have performed Steps 4 and 5. If you accidentally release the button, start the procedure again.
 - Press and hold the **Power/Play/Pause**  button.
 - After 5 seconds, release both buttons.
 - Connect your player to your computer's USB port. Your player will be recognized as a USB Mass Storage Device.
 - Double-click the firmware file you downloaded earlier, and follow the instructions on the screen.

Why does formatting my player in Windows Vista take a long time?

Windows Vista formats devices differently from earlier versions of Windows. As such, your player may take a significantly longer time to perform a full format. Rest assured that once formatted, your player will perform as expected. To

format your player in considerably less time, use the Quick Format option instead.

Regulatory Information

The following sections contain notices for various countries:

CAUTION: This product is intended for use with FCC/CE certified computer equipment. Please check the equipment operating/installation manual and/or with the equipment manufacturer to verify/confirm if your equipment is suitable prior to the installation or use of the product.

Notice for the USA

FCC Part 15: This equipment has been tested and found to comply with the limits for a Class B digital device, pursuant to Part 15 of the FCC Rules. These limits are designed to provide reasonable protection against harmful interference in a residential installation. This equipment generates, uses and can radiate radio frequency energy and, if not installed and used in accordance with the instructions, may cause harmful interference to radio communications. However, there is no guarantee that interference will not occur in a particular installation. If this equipment does cause harmful interference to radio or television reception, which can be determined by turning the equipment off and on, the user is encouraged to try to correct the interference by one or more of the following measures:

- Reorient or relocate the receiving antenna.
- Increase the separation between the equipment and receiver.
- Connect the equipment into an outlet on a circuit different from that to which the receiver is connected.
- Consult the dealer or an experienced radio/TV technician for help.

This device complies with part 15 of the FCC Rules. Operation is subject to the following two conditions:

1. This device may not cause harmful interference, and
- This device must accept any interference received, including interference that may cause undesired operation.

CAUTION: To comply with the limits of the Class B digital device, pursuant to Part 15 of the FCC Rules, this device must be installed with computer equipment certified to comply with Class B limits.

All cables used to connect to the computer and peripherals must be shielded and grounded. Operation with non-certified computers or non-shielded cables may result in interference to radio or television reception.

MODIFICATION: Any changes or modifications not expressly approved by the grantee of this device could void the user's authority to operate the device.

Declaration of Conformity

According to the FCC96 208 and ET95-19,

Manufacturer/Importer's Name:

Creative Labs, Inc.

Manufacturer/Importer's Address:

1901 McCarthy Boulevard

Milpitas, CA. 95035

United States

Tel: (408) 428-6600

declares under its sole responsibility that the product

Trade Name:

Creative Labs

Model Numbers:

DAP-FL0045

has been tested according to the FCC / CISPR22/97 requirement for Class B devices and found compliant with the following standards:

EMI/EMC:

ANSI C63.4 2003, FCC Part 15 Subpart B

Complies with Canadian ICES-003 Class B

This device complies with part 15 of the FCC Rules.

Operation is subject to the following two conditions:

- This device may not cause harmful interference, and
- This device must accept any interference received, including interference that may cause undesirable operation.

Ce matériel est conforme à la section 15 des règles FCC.

Son Fonctionnement est soumis aux deux conditions suivantes:

- Le matériel ne peut être source D'interférences et
- Doit accepter toutes les interférences reçues, Y compris celles pouvant provoquer un fonctionnement indésirable.

Compliance Manager

Creative Labs, Inc.

August 14, 2007

Notice for Canada

This Class B digital apparatus complies with Canadian ICES-003.

Cet appareil numérique de la classe B est conforme à la norme NMB-003 du Canada.

CANADIAN CLASS B STATEMENT: This digital device does not exceed the Class B limits for radio noise emissions from digital apparatus as set out in the interference-causing equipment standard entitled "Digital Apparatus," ICES-003 of the Department of Communications.

Cet appareil numérique respecte les limites de bruits radioélectriques applicables aux appareils numériques de Classe B prescrites dans la norme sur le matériel brouilleur: "Appareils Numériques," NMB-003 édictée par le ministre des Communications.

MODIFICATION: Any changes or modifications not expressly approved by the grantee of this device could void the user's authority to operate the device.

Toute modification non approuvée explicitement par le fournisseur de licence de l'appareil peut entraîner l'annulation du droit de l'utilisateur à utiliser l'appareil.

European Compliance

This product conforms to the following:

EMC Directive 2004/108/EC.

Mains operated products for the European market comply with Low Voltage Directive 2006/95/EC.

Communication / RF wireless products for the European market comply with R&TTE Directive 1999/5/EC.

CAUTION: To comply with the Europe CE requirement, this device must be installed with CE certified computer equipment which meet with Class B limits.

All cables used to connect this device must be shielded, grounded and no longer than 3m in length. Operation with non-certified computers or incorrect cables may result in interference to other devices or undesired effects to the product.

MODIFICATION: Any changes or modifications not expressly approved by Creative Technology Limited or one of its affiliated companies could void the user's warranty and guarantee rights.

Safety Information

Refer to the following information to use your product safely, and to reduce the chance of electric shock, short-circuiting, damage, fire, hearing impairment or other hazards. **Improper handling may void the warranty for your product. For more information, read the warranty available with your product.**

- Do not dismantle or attempt to repair your product.

Refer all servicing to authorized repair agents.

- Do not expose your product to temperatures outside the range of 0°C to 45°C (32°F to 113°F).
- Do not pierce, crush or set fire to your product.
- Keep your product away from strong magnetic objects.
- Do not subject your product to excessive force or impact.
- Do not expose your product to water or moisture.

If your product is moisture-resistant, take care not to immerse your product in water or expose it to rain.

- When a conductive apparatus such as earphones, is used in close proximity with a CRT television or CRT monitor, the latter may emit an electrostatic discharge. This electrostatic discharge can be felt as a static shock. While this static shock is usually harmless, it is good practice to avoid close contact with CRT devices when using earphones.
- Do not listen to audio on your earbuds or headphones at high volume for prolonged periods of time as hearing loss may result. For users in the United States, go to www.hei.org.
- Do not attempt to remove the embedded battery.

The product must be disposed of according to local environmental regulations. To replace the battery, return your product to your regional support office. For product service information, go to www.creative.com.

General Specifications

Size (WxHxD)

- 24.99 mm (1") x 77.49 mm (3") x 8.9 mm (1/3")

Weight (approximate)

- 17.8 g (2/3 ounce)

Power Source

- Battery: 1 x Rechargeable Lithium Ion battery
- USB bus powered when connected to a powered USB port on a computer

Audio Playback Formats

- Audible Format 2, 3 and 4
- MP3 (Up to 320 kbps)
- WMA (Up to 320 kbps)
- WMA with Windows Media Digital Rights Management (WMDRM) 9

MP3 Playback Performance

- Signal-to-Noise Ratio: Up to 90 dB
- Channel Separation: Up to 65 dB
- Frequency Response: 20 Hz ~ 20 kHz
- Harmonic Distortion Output: <0.1%

Connectors

- Headphone jack: 3.5 mm (1/8") stereo minijack, 5 ~ 7 mW per channel
- USB connector

Firmware Support

- Upgradable via USB (firmware upgrades are available from www.creative.com/support).

Earphone Specifications

- Frequency Range: 20 Hz ~ 20 KHz
- Sensitivity: 111 dB \pm 3 dB SPL at 1 KHz
- Impedance: 32 W \pm 15%
- Plug: 3.5 mm (1/8") stereo minijack

License and Copyright

Information in this document is subject to change without notice and does not represent a commitment on the part of Creative Technology Ltd. No part of this manual may be reproduced or transmitted in any form or by any means, electronic or mechanical, including photocopying and recording, for any purpose without the written permission of Creative Technology Ltd. The software described in this document is furnished under a license agreement and may be used or copied only in accordance with the terms of the license agreement. It is against the law to copy the software on any other medium except as specifically allowed in the license agreement. The licensee may make one copy of the software for backup purposes only.

This product is not intended for the unauthorized recording or distribution of copyrighted material.

MuVo and the Creative logo are trademarks or registered trademarks of Creative Technology Ltd. in the United States and/or other countries. Microsoft, Windows, Windows Media, Windows Vista and PlaysForSure are trademarks or registered trademarks of Microsoft Corporation. All rights reserved.

Intel and Pentium are trademarks of Intel Corporation in the U.S. and other countries.

Audible and AudibleManager are registered trademarks of Audible, Inc. in the U.S. and/or other countries.

RealPlayer is a trademark or a registered trademark of RealNetworks, Inc.

Winamp is a trademark or registered trademark of Nullsoft, Inc. in the United States and/or other countries.

All other products are trademarks or registered trademarks of their respective owners.

Copyright © 2007 by Creative Technology Ltd. All rights reserved.

Version 1.0

September 2007